



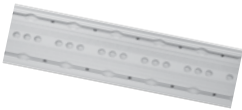
INSTRAXX[®]

System Components Guide & Specifications



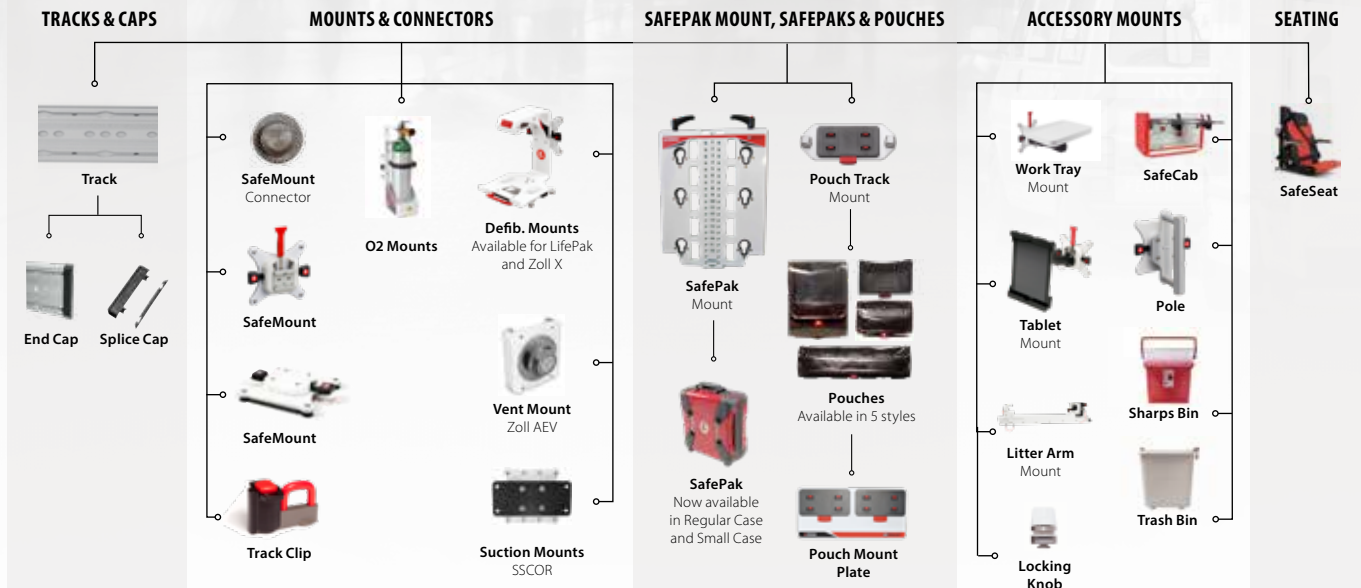


The iN/STRAXX Integrated Vehicle Component System **provides crash-ready safety** for providers and patients and **efficiency that reduces operating costs** for agencies.



The iN/STRAXX system is designed to secure loose equipment inside the ambulance and allow medics to deliver patient care from a seated, restrained position. This **reduces the risk of death and injury** during crashes, sudden stops, or hard maneuvers.

This modular system features wall-mounted tracks that secure a series of SafeMount Equipment Mounts, SafeCab Storage Cabinets, and SafePak Supply Bags. iN/STRAXX modularity supports better workflows and inventory management which **lowers operating costs**.



Delivery of care is now **safer, more convenient, and more efficient** with **IN/TRAXX**

CRASH TESTED SAFETY

- **Crash-ready** Dynamically crash-tested to the SAE J3043 requirement that keeps equipment secure during 26g impacts.
- **Seated & Restrained Delivery of Care** Reach supplies and deliver care without standing in a moving vehicle.
- **Soft-Sided Storage** SafePaks and pouches are soft-sided, eliminating potential strike hazards during hard maneuvers or crashes.

REDUCED PROCESSING TIME & MAINTENANCE

- **Faster Turn Time** SafePaks and pouches are easy to remove and clean, making restocking fast and easy.
- **Reduced Downtime** Damaged or out-of-service components can be quickly removed and replaced without taking a vehicle out of service.

REDUCED SYSTEM WASTE

- **Improved Inventory Control** SafePaks and pouches make inventory control easier with better visibility of supplies, reducing duplication, waste, and expired supplies.

IMPROVED ERGONOMICS

- **Easy Access** Modularity allows supplies and equipment to be placed next to the provider in the delivery of care position, eliminating the need to get up in a moving vehicle to access supplies.
- **Provider Specific Configuration** Quickly reposition equipment and supplies exactly where you want them.

IMPROVED FLEXIBILITY

- **Interoperability** Supplies and equipment are interchangeable across vehicles and vehicle types.
- **Mission-Specific Customization** Equipment and supplies can be removed or repositioned to adapt a vehicle to different response scenarios (e.g., viral outbreak or mass casualty).
- **Expandable System** Components can be added as your needs change.

IMPROVED INFECTION CONTROL

- **Cleaning and Decontamination** Components are removable and power washable for thorough, easy cleaning.
- **Containment** Individual pouches isolate potential contamination to specific areas, limiting the exposure of expensive supplies.

REDUCE COST OF OWNERSHIP

- **Reduced Space Requirements** Requires less space for storage and equipment, allowing use of smaller, less expensive vehicles.
- **Increased Utilization** Faster turn times so your vehicle is more readily available for revenue-generating activity.


All products come with a **2 Year Warranty**, unless stated otherwise.

CERTIFICATIONS Fully compliant with SAE J3043 testing requirements. Meets KKK-A-1822F, NFPA-1917, and CAAS GVS v2.0 Standards.

Learn more at www.ferno.com/us/intraxx



Scalable to Any Size Vehicle



**55 lb
25 kg**

*Per Set of 4
Drop-in Points*

Load Capacity

The track is designed to hold 55 lb/25 kg per 12 in/305 mm section (one set of four drop-in points). Inspect the track if the load capacity has been exceeded.

Track System | 1016 mm

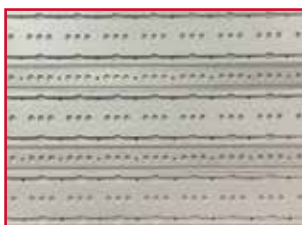
Most commonly used track for wall and bench top applications and can be cut to size.



	IMPERIAL	METRIC
Part Number	0480001	
Dimensions	W 7.5 in D 0.5 in L 40 in	W 189 mm D 12.7 mm L 1016 mm
Weight	7.5 lb	3.4 kg
Load Capacity	220.4 lb	100 kg
Crash Tested	10g, 22g, 26g	

**Track System | TracLINXX
PRE-RELEASE ONLY**

The New iN/TRAXX TracLINXX allows for creating an iN/TRAXX "wall" using a minimum of two of the #0480001 tracks placed on either side of the TracLINXX. There is no limit on the number of tracks you add to create a wall.



	IMPERIAL	METRIC
Part Number	0480235	
Dimensions	W 3.4 in D 0.5 in L 40 in	W 87.5 mm D 12.7 mm L 1016 mm
Weight	3.3 lb	1.5 kg
Crash Tested	10g, 22g, 26g	

- Refer to separate customer drawings for mounting details
- Refer to separate operators manual
- iN/TRAXX wall shown has two #0480235 tracks & three #0480001 tracks

KEY

(W) Width is measured as 'Y' axis in relation to mounting to the track
 (D) Depth is measured as 'Z' axis in relation to mounting to the track
 (L) Length is measured as 'X' axis in relation to mounting to the track

Tracks

**Track System | 1016 mm,
No Holes (Bonding)**

This track is used for bonding applications where there are no fixing holes. This track is suitable for wall, ceiling and bench top applications. Bonding method is the sole responsibility of the person installing the track.



	IMPERIAL	METRIC
Part Number	0480073	
Dimensions	W 7.4 in D 0.5 in L 40 in	W 189 mm D 12.7 mm L 1016 mm
Weight	7.5 lb	3.4 kg
Load Capacity	220.4 lb	100 kg
Crash Tested	10g, 22g, 26g	

**Track System | 1016 mm
Left & Right**

This track is suitable for wall, ceiling and bench top applications. It has a single drop in zone located in either the left or right side.



	IMPERIAL	METRIC
Part Number	0480107	
Dimensions	W 7.4 in D 0.5 in L 40 in	W 189 mm D 12.7 mm L 1016 mm
Weight	7.5 lb	3.4 kg
Load Capacity	220.4 lb	100 kg
Crash Tested	10g, 22g, 26g	

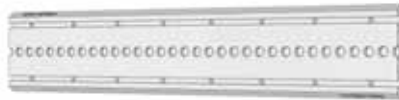
KEY

(W) Width is measured as 'Y' axis in relation to mounting to the track
 (D) Depth is measured as 'Z' axis in relation to mounting to the track
 (L) Length is measured as 'X' axis in relation to mounting to the track

Track System | 1016 mm

Blank

This track has no drop-in zone and is generally installed to lengthen a piece of mounted equipment's travel. This track is suitable for wall, ceiling and bench top applications.



	IMPERIAL	METRIC
Part Number	0480108	
Dimensions	W 7.4 in D 0.5 in L 40 in	W 189 mm D 12.7 mm L 1016 mm
Weight	7.5 lb	3.4 kg
Load Capacity	220.4 lb	100 kg
Crash Tested	10g, 22g, 26g	

Track System | 1016 Centre

Drop-in

This track is suitable for wall, ceiling and bench top applications. It has a single drop in zone located in the center of the track. This allows more flexibility and choice when designing your ambulance.



	IMPERIAL	METRIC
Part Number	0480171	
Dimensions	W 7.4 in D 0.5 in L 40 in	W 189 mm D 12.7 mm L 1016 mm
Weight	7.5 lb	3.4 kg
Load Capacity	220.4 lb	100 kg
Crash Tested	10g, 22g, 26g	

KEY

- (W) Width is measured as 'Y' axis in relation to mounting to the track
- (D) Depth is measured as 'Z' axis in relation to mounting to the track
- (L) Length is measured as 'X' axis in relation to mounting to the track

Track System | 340 mm Track,
Black End Caps

This short track is commonly used for mounting single pieces of equipment supplied with black end caps. This track is suitable for wall and bench top applications.



	IMPERIAL	METRIC
Part Number	0480062	
Dimensions	W 7.6 in D 0.7 in L 13.4 in	W 193 mm D 17 mm L 340 mm
Weight	2.6 lb	1.2 kg
Load Capacity	55.1 lb	25 kg
Crash Tested	10g, 22g, 26g	

* Limited Lifetime Warranty

End Caps | Regular

End caps are used to fill an end of the track and can be removed if the track is to be extended.



	IMPERIAL	METRIC
Part Number	Black: 0480002 Grey: 0480003 <i>(While Supplies Last)</i>	
Dimensions	W 7.6 in D 0.7 in L 1.9 in	W 193 mm D 17 mm L 48 mm
Weight	0.11 lb	0.05 kg
Crash Tested	10g, 22g, 26g	

KEY

(W) Width is measured as 'Y' axis in relation to mounting to the track
(D) Depth is measured as 'Z' axis in relation to mounting to the track
(L) Length is measured as 'X' axis in relation to mounting to the track

End Caps | Thin

Thin end caps are used to fill an end of the track and can be removed if the track is to be extended. Thin end caps are used where the track end is close to a wall or requires mounts to be still entered from though the end cap.



	IMPERIAL	METRIC
Part Number Black: 0480049 Grey: 0480050 <i>(While Supplies Last)</i>		
Dimensions	W 7.4 in D 0.5 in L 0.15 in	W 189 mm D 12.7 mm L 3.7 mm
Weight	0.02lb	0.01 kg
Crash Tested	10g, 22g, 26g	

T-Splice Caps

T-Splice Caps are used where horizontal and vertical track meet.



	IMPERIAL	METRIC
Part Number Black: 0480005 Grey: 0480006 <i>(While Supplies Last)</i>		
Dimensions	W 7.6 in D 0.6 in L 0.9 in	W 193 mm D 16 mm L 23 mm
Weight	0.08 lb	0.04 kg
Crash Tested	10g, 22g, 26g	

KEY

(W) Width is measured as 'Y' axis in relation to mounting to the track
 (D) Depth is measured as 'Z' axis in relation to mounting to the track
 (L) Length is measured as 'X' axis in relation to mounting to the track

Track Connectors

SafeMount | Threaded (25 kg)

This SafeMount with a 25 kg load capacity is our most popular mount. It can be used to mount a variety of equipment.



	IMPERIAL	METRIC
Part Number	0480010	
Dimensions	W 5.9 in D 1.4 in L 6.6 in	W 151 mm D 34.5 mm L 167 mm
Weight	1.86 lb	0.85 kg
Load Capacity	55.1 lb	25 kg
Crash Tested	10g, 22g, 26g	

SafeMount | Threaded (12 kg)

The 12 kg capacity SafeMount while lesser in capacity functions the same as the 25 kg version. It can be used to mount a variety of equipment.



	IMPERIAL	METRIC
Part Number	0480146	
Dimensions	W 5.9 in D 1.6 in L 6.6 in	W 151 mm D 40 mm L 167 mm
Weight	1.6 lb	0.74 kg
Load Capacity	26.5 lb	12 kg
Crash Tested	10g, 22g, 26g	

KEY

(W) Width is measured as 'Y' axis in relation to mounting to the track
 (D) Depth is measured as 'Z' axis in relation to mounting to the track
 (L) Length is measured as 'X' axis in relation to mounting to the track

Track Connectors

SafeMount | HD Threaded (40 kg)

This SafeMount with a 40 kg load capacity can be used to mount a variety of equipment. Due to the weight this SafeMount can carry, this product will not be sold without first advising Ferno IN/TRAXX of its intended use.



	IMPERIAL	METRIC
Part Number	0480172	
Dimensions	W 6 in D 1.4 in L 6.7 in	W 151 mm D 34.5 mm L 167 mm
Weight	1.87 lb	0.85 kg
Load Capacity	88 lb	40 kg
Crash Tested	10g, 22g, 26g	

• This product will not be sold without first advising Ferno IN/TRAXX of its intended use

SafeMount | With Connector

The connector in this SafeMount provides an alternative to mounting the equipment directly to the SafeMount providing the ability to remove the equipment at short notice.



	IMPERIAL	METRIC
Part Number	0480011	
Dimensions	W 7.4 in D 1.9 in L 6.6 in	W 187 mm D 48.5 mm L 167 mm
Weight	1.65 lb	0.75 kg
Load Capacity	22 lb	10 kg
Crash Tested	10g, 22g, 26g	

KEY

(W) Width is measured as 'Y' axis in relation to mounting to the track
 (D) Depth is measured as 'Z' axis in relation to mounting to the track
 (L) Length is measured as 'X' axis in relation to mounting to the track

Track Connectors

Track Clip

Track clips provide a suitable area on the track to attach equipment or strapping points.



	IMPERIAL	METRIC
Part Number	0480008	
Dimensions	W 2.7 in D 1.6 in L 1.6 in	W 69 mm D 40.5 mm L 41.5 mm
Weight	0.2 lb	.08kg
Load Capacity	5 lb	2.27 kg
Crash Tested	10g, 22g, 26g	

KEY

(W) Width is measured as 'Y' axis in relation to mounting to the track
 (D) Depth is measured as 'Z' axis in relation to mounting to the track
 (L) Length is measured as 'X' axis in relation to mounting to the track

SafePak Mount, SafePaks & SafeCabs

SafePak | Mount

The SafePak Mount provides the area to secure the small and regular size SafePaks.



	IMPERIAL	METRIC
Part Number	0480022 <i>(While Supplies Last)</i>	
Dimensions	W 43.9 in D 2 in L 19 in	W 1114 mm D 50 mm L 485 mm
Weight	12.8 lb	5.8 kg
Load Capacity	26.5 lb	12 kg
Crash Tested	10g, 22g, 26g	

SafePak | SafePak Multi-Mount 3-Row

The SafePak Mount provides the area to secure the small and regular size SafePaks. This has many location options for greater flexibility.



	IMPERIAL	METRIC
Part Number	0480193 (SafeMount Included) 0480209 (Base Plate Only)	
Dimensions	W 23.6 in D 1.1 in L 16.7 in	W 600 mm D 30 mm L 425 mm
Weight	0480193 7.3 lb 0480209 5 lb	3.3 kg 2.3 kg
Load Capacity	26.5 lb	12 kg
Crash Tested	10g, 22g, 26g	

- SafeMount supplied with 0480193
- No SafeMount supplied with 0480209
- Refer to separate operators manual

KEY

(W) Width is measured as 'Y' axis in relation to mounting to the track
 (D) Depth is measured as 'Z' axis in relation to mounting to the track
 (L) Length is measured as 'X' axis in relation to mounting to the track

SafePak Mount, SafePaks & SafeCabs

SafePak | SafePak Multi-Mount 2-Row

The SafePak Mount provides the area to secure the small and regular size SafePaks. This has many location options for greater flexibility.



0480201



0480207

SafePak | Ledge and Strap Kit

The SafePak Ledge and Strap Kit can be added to the new SafePak mounting plate to allow for the retention of different sized SafePaks for greater flexibility.



KEY

(W) Width is measured as 'Y' axis in relation to mounting to the track
 (D) Depth is measured as 'Z' axis in relation to mounting to the track
 (L) Length is measured as 'X' axis in relation to mounting to the track

	IMPERIAL	METRIC
Part Number	0480201 (SafeMount Included) 0480207 (Base Plate Only)	
Dimensions	W 16 in D 1.8 in L 17 in	W 401 mm D 44 mm L 425 mm
Weight	0480201 5.3 lb 0480207 3.5 lb	2.4 kg 1.6 kg
Load Capacity	26.4 lb 12 kg	
Crash Tested	10g, 22g, 26g	

- SafeMount supplied with 0480201
- No SafeMount supplied with 0480207
- Refer to separate operators manual

	IMPERIAL	METRIC
Part Number	0480204	
Dimensions	W 4.2 in D 4.2 in L 10 in	W 104 mm D 104 mm L 250 mm
Weight	0.88 lb 0.4 kg	
Load Capacity	17.6 lb 8 kg	
Crash Tested	10g, 22g, 26g	

- Compatible with part numbers 0480193, 0480209, 0480207, and 0480201
- Refer to separate operators manual

SafePak Mount, SafePaks & SafeCabs

SafePak | Small

The small SafePak allows the user to securely stow 2 small SafePaks per SafePak mount. All SafePaks are removable allowing for a comprehensive kit to be taken to the scene or patient outside of the vehicle. SafePaks come complete with a full set of pouches as shown.



	IMPERIAL	METRIC
Part Number	Red: 0480023 Blue: 0480077*	
Dimensions	W 12.8 in D 9.4 in L 18.1 in	W 325 mm D 240 mm L 460 mm
Weight	11.1 lb	5 kg
Load Capacity	17 lb	8 kg
Crash Tested	10g, 22g, 26g	

*While Supplies Last

SafePak | Regular

The regular SafePak provides ample space to install pouches with the flexibility of removing the SafePak from the wall to attend scenes located outside of the vehicle. SafePaks come complete with a full set of pouches as shown.



	IMPERIAL	METRIC
Part Number	Blue: 0480059* White: 0480060*	
Dimensions	W 18.9 in D 9.4 in L 18.1 in	W 481 mm D 240 mm L 460 mm
Weight	16.9 lb	7.7 kg
Load Capacity	25 lb	11.3 kg
Crash Tested	10g, 22g, 26g	

*While Supplies Last

KEY

(W) Width is measured as 'Y' axis in relation to mounting to the track
 (D) Depth is measured as 'Z' axis in relation to mounting to the track
 (L) Length is measured as 'X' axis in relation to mounting to the track

SafePak Mount, SafePaks & SafeCabs

SafeCab | Small

Installed on INJTRAXX, the small SafeCab provides an area for small items to be safely secured during transit. All SafeCabs have the ability to display tamper evidence with the right locking lever displaying green for untampered or red for tampered. 0480085 is Bulkhead compliant.



	IMPERIAL	METRIC
Part Number	0480085	
Dimensions	W 13.8 in D 13 in L 21.5 in	W 350 mm D 330 mm L 545 mm
Weight	29.8 lb	13.5 kg
Load Capacity	11 lb	5 kg
Crash Tested	10g, 22g, 26g	

SafeCab | Medium

Installed on INJTRAXX, the medium SafeCab provides area for items to be safely secured during transit. Our most popular choice in SafeCabs.



	IMPERIAL	METRIC
Part Number	0480086	
Dimensions	W 13.8 in D 13 in L 31.5 in	W 350 mm D 330 mm L 800 mm
Weight	36.4 lb	16.5 kg
Load Capacity	17.6 lb	8 kg
Crash Tested	10g, 22g, 26g	

KEY

(W) Width is measured as 'Y' axis in relation to mounting to the track
 (D) Depth is measured as 'Z' axis in relation to mounting to the track
 (L) Length is measured as 'X' axis in relation to mounting to the track

SafePak Mount, SafePaks & SafeCabs

SafeCab | Large

Installed on IN/TRAXX, the largest SafeCab provides sufficient area to store those longer awkward items that need to be safely secured during transit.



	IMPERIAL	METRIC
Part Number	0480087	
Dimensions	W 13.8 in D 13 in L 46.5 in	W 350 mm D 330 mm L 1180 mm
Weight	51.8 lb	23.5 kg
Load Capacity	26.5 lb	12 kg
Crash Tested	10g, 22g, 26g	

KEY

(W) Width is measured as 'Y' axis in relation to mounting to the track
 (D) Depth is measured as 'Z' axis in relation to mounting to the track
 (L) Length is measured as 'X' axis in relation to mounting to the track

SafePak Pouches

SafePak Pouch | Small

All pouches are capable of displaying the contents. Pouches can be labeled using label sheets available separately. This option uses half of a Pouch Carrier. See Pt No 0480030 for Pouch Mount Carrier.



	IMPERIAL	METRIC
Part Number	0480026	
Dimensions	W 4.7 in D 2.8 in L 3.9 in	W 120 mm D 70 mm L 100 mm
Weight	0.3 lb	0.14 kg
Load Capacity	0.5 lb	0.23 kg
Crash Tested	10g, 22g, 26g	

- Pack of 2
- Label Sheets for Medium Pouch available (2381858)

SafePak Pouch | Medium

All pouches are capable of displaying the contents. Pouches can be labeled using label sheets available separately. The medium option introduces the ability to divide the pouch into equal parts via the SafePak Pouch Divider. The medium takes up 1 pouch carrier.



	IMPERIAL	METRIC
Part Number	0480027	
Dimensions	W 4.7 in D 2.8 in L 7.9 in	W 120 mm D 70 mm L 200 mm
Weight	0.6 lb	0.25 kg
Load Capacity	2.5 lb	1.13 kg
Crash Tested	10g, 22g, 26g	

- Pack of 2
- Label Sheets for Small Pouch available (2381859)

KEY

(W) Width is measured as 'Y' axis in relation to mounting to the track
 (D) Depth is measured as 'Z' axis in relation to mounting to the track
 (L) Length is measured as 'X' axis in relation to mounting to the track

SafePak Pouches

SafePak Pouch | Large Vertical

All pouches are capable of displaying the contents. Pouches can be labeled using label sheets available separately. The large vertical pouch uses 2 pouch carriers and has provision for use of the Pouch Divider.



	IMPERIAL	METRIC
Part Number	0480028	
Dimensions	W 10.2 in D 2.8 in L 7.9 in	W 260 mm D 70 mm L 200 mm
Weight	0.9 lb	0.4 kg
Load Capacity	4.5 lb	2 kg
Crash Tested	10g, 22g, 26g	

- Pack of 2
- Label Sheets for Medium Pouch available (2381859)

SafePak Pouch | Large Horizontal

All pouches are capable of displaying the contents. Pouches can be labeled using label sheets available separately. The large horizontal pouch uses 2 Pouch Carriers. This pouch can be used with the Pouch Divider to make up to 4 compartments within.



	IMPERIAL	METRIC
Part Number	0480029	
Dimensions	W 4.7 in D 2.8 in L 15.7 in	W 120 mm D 70 mm L 400 mm
Weight	0.9 lb	0.4 kg
Load Capacity	4.5 lb	2 kg
Crash Tested	10g, 22g, 26g	

- Pack of 2
- Label Sheets for Large Pouch available (2381860)

KEY

(W) Width is measured as 'Y' axis in relation to mounting to the track
 (D) Depth is measured as 'Z' axis in relation to mounting to the track
 (L) Length is measured as 'X' axis in relation to mounting to the track

SafePak Pouches

SafePak Pouch | Medium Mesh

Medium Mesh SafePak Pouches are essentially a one-handed operation proving to be the quickest and easiest pouches to access. Uses 1 Pouch Carrier with no Pouch Divider.



	IMPERIAL	METRIC
Part Number	0480092	
Dimensions	W 4.7 in D Expandable to 4 in L 7.9 in	W 120 mm D 101.6 mm L 200 mm
Weight	0.4 lb	0.2 kg
Load Capacity	2.5 lb	1.13 kg

- Pack of 2
- Pictured with Spiracle disposable BVM

SafePak Pouch Divider

Used in the medium and large pouches and provides the ability to divide a pouch into different areas.



	IMPERIAL	METRIC
Part Number	0480072	
Dimensions	W 3.9 in D 2.6 in L 1.57 in	W 99 mm D 64.8 mm L 40 mm

- Pack of 8

KEY

(W) Width is measured as 'Y' axis in relation to mounting to the track
 (D) Depth is measured as 'Z' axis in relation to mounting to the track
 (L) Length is measured as 'X' axis in relation to mounting to the track

SafePak Pouches

SafePouch | Small Jumbo

All pouches are capable of displaying the contents. Pouches can be labeled using sheets available separately. This option uses half a pouch mount carrier plates (#0480030). See SafePak Pouch Mounts for multiple options.



	IMPERIAL	METRIC
Part Number	0480173	
Dimensions	W 4.7 in D 4.7 in L 3.9 in	W 120 mm D 120 mm L 100 mm
Weight	0.4 lb	0.2 kg
Load Capacity	.5 lb	.22 kg
Crash Tested	10g, 20g, 26g	

- Pack of 2
- Labels size medium, available standard or custom
- Contact sales rep for custom labels

SafePouch | Medium Jumbo

All pouches are capable of displaying the contents. Pouches can be labeled using sheets available separately. This option uses one pouch mount carrier plate (#0480030). See SafePak Pouch Mounts for multiple options.



	IMPERIAL	METRIC
Part Number	0480174	
Dimensions	W 4.7 in D 4.7 in L 7.9 in	W 120 mm D 120 mm L 200 mm
Weight	0.6 lb	0.3 kg
Load Capacity	2.5 lb	1.13 kg
Crash Tested	10g, 20g, 26g	

- Pack of 2
- Labels size medium, available standard or custom
- Contact sales rep for custom labels

KEY

(W) Width is measured as 'Y' axis in relation to mounting to the track
 (D) Depth is measured as 'Z' axis in relation to mounting to the track
 (L) Length is measured as 'X' axis in relation to mounting to the track

SafePak Pouches

SafePouch | Large Vertical Jumbo

All pouches are capable of displaying the contents. Pouches can be labeled using sheets available separately. This option uses two pouch mount carrier plates (#0480030). See SafePak Pouch Mounts for multiple options.



	IMPERIAL	METRIC
Part Number	0480175	
Dimensions	W 10.2 in D 4.7 in L 7.9 in	W 260 mm D 120 mm L 200 mm
Weight	1 lb	0.5 kg
Load Capacity	4.5 lb	2 kg
Crash Tested	10g, 20g, 26g	

- Pack of 2
- Labels size medium, available standard or custom
- Contact sales rep for custom labels

SafePouch | Large Horizontal Jumbo

All pouches are capable of displaying the contents. Pouches can be labeled using sheets available separately. This option uses two pouch mount carrier plates (#0480030). See SafePak Pouch Mounts for multiple options.



	IMPERIAL	METRIC
Part Number	0480176	
Dimensions	W 4.7 in D 4.7 in L 15.7 in	W 120 mm D 120 mm L 400 mm
Weight	1 lb	0.5 kg
Load Capacity	4.5 lb	2 kg
Crash Tested	10g, 20g, 26g	

- Pack of 2
- Labels size large, available standard or custom
- Contact sales rep for custom labels

KEY

(W) Width is measured as 'Y' axis in relation to mounting to the track
 (D) Depth is measured as 'Z' axis in relation to mounting to the track
 (L) Length is measured as 'X' axis in relation to mounting to the track

SafePak Pouches

SafePouch | Dual Large Vertical Jumbo

All pouches are capable of displaying the contents. Pouches can be labeled using sheets available separately. This option uses four pouch mount carrier plates (#0480030). See SafePak Pouch Mounts for multiple options.



	IMPERIAL	METRIC
Part Number	0480177	
Dimensions	W 10.2 in D 4.7 in L 15.7 in	W 260 mm D 120 mm L 400 mm
Weight	1.8 lb	0.9 kg
Load Capacity	8.8 lb	4 kg
Crash Tested	10g, 20g, 26g	

- Pack of 2
- Labels size large, available standard or custom
- Contact sales rep for custom labels

KEY

(W) Width is measured as 'Y' axis in relation to mounting to the track
 (D) Depth is measured as 'Z' axis in relation to mounting to the track
 (L) Length is measured as 'X' axis in relation to mounting to the track

SafePak Pouch Mounts

Pouch Mount Carrier | Single

Pouch Mount Carriers are used in the SafePaks, Pouch Track Mounts, Pouch Mount Plates.



	IMPERIAL	METRIC
Part Number	0480030	
Dimensions	W 4.6 in D 0.6 in L 7.5 in	W 118 mm D 15 mm L 190 mm
Weight	0.23 lb	0.11 kg
Load Capacity	5 lb	2.4 kg
Crash Tested	10g, 22g, 26g	

Pouch Track Mount | Single

The Single Track Mount has the ability to be installed anywhere on the INTRAXX Track. It will accept and support the small and medium pouches.



	IMPERIAL	METRIC
Part Number	0480031	
Dimensions	W 4.9 in D 2.1 in L 11.4 in	W 125 mm D 53.9 mm L 290 mm
Weight	1.59 lb	0.73 kg
Load Capacity	5 lb	2.4 kg
Crash Tested	10g, 22g, 26g	

KEY

(W) Width is measured as 'Y' axis in relation to mounting to the track
 (D) Depth is measured as 'Z' axis in relation to mounting to the track
 (L) Length is measured as 'X' axis in relation to mounting to the track

SafePak Pouch Mounts

Pouch Track Mount |

Double Vertical

The Double Vertical mount also provides the flexibility to install anywhere and will accept and support 2 medium, 1 large vertical or 4 small pouches.



	IMPERIAL	METRIC
Part Number	0480032	
Dimensions	W 10.6 in D 2.1 in L 11.4 in	W 268 mm D 53.9 mm L 290 mm
Weight	2.7 lb	1.23 kg
Load Capacity	5 lb	2.4 kg
Crash Tested	10g, 22g, 26g	

Pouch Track Mount |

Double Horizontal

This mount provides 2 carriers capable of securing the small, medium and large horizontal pouches.



	IMPERIAL	METRIC
Part Number	0480083	
Dimensions	W 4.9 in D 2.1 in L 21.5 in	W 125 mm D 53.9 mm L 545 mm
Weight	2.2 lb	1.14 kg
Load Capacity	5 lb	2.4 kg
Crash Tested	10g, 22g, 26g	

KEY

(W) Width is measured as 'Y' axis in relation to mounting to the track
 (D) Depth is measured as 'Z' axis in relation to mounting to the track
 (L) Length is measured as 'X' axis in relation to mounting to the track

SafePak Pouch Mounts

Pouch Mount Plate | 3T2

The 6 carriers can take a multitude of pouches increasing the flexibility of your storage options. The Pouch Mount Plates are installed directly to the wall of the vehicle.



	IMPERIAL	METRIC
Part Number	0480155	
Dimensions	W 17.8 in D 1.1 in L 16.4 in	W 453 mm D 28.5 mm L 416 mm
Weight	4.2 lb	1.9 kg
Load Capacity	20.6 lb	9.4 kg
Crash Tested	10g, 22g, 26g	

Pouch Mount Plate | 4T2

The largest mount with 8 carriers can be setup to hold any pouch and can be configured easily within the vehicle.



	IMPERIAL	METRIC
Part Number	0480160	
Dimensions	W 23.1 in D 1.1 in L 16.4 in	W 588 mm D 28.5 mm L 416 mm
Weight	5.4 lb	2.5 kg
Load Capacity	27.4 lb	12.4 kg
Crash Tested	10g, 22g, 26g	

KEY

(W) Width is measured as 'Y' axis in relation to mounting to the track
 (D) Depth is measured as 'Z' axis in relation to mounting to the track
 (L) Length is measured as 'X' axis in relation to mounting to the track

SafePak Pouch Mounts

Pouch Mount Plate | 2T2

The plate has 4 carriers which provide area for the largest to the smallest pouches in the range.



	IMPERIAL	METRIC
Part Number	0480161	
Dimensions	W 11.7 in D 1.1 in L 16.4 in	W 298 mm D 28.5 mm L 416 mm
Weight	2.8 lb	1.3 kg
Load Capacity	13.7 lb	6.2 kg
Crash Tested	10g, 22g, 26g	

Pouch Mount Plate | 1T2

Able to be installed in tight areas of the vehicle, this mount plate provides storage in areas that would not usually be used.



	IMPERIAL	METRIC
Part Number	0480162	
Dimensions	W 7.2 in D 1.1 in L 16.4 in	W 183 mm D 28.5 mm L 416 mm
Weight	1.6 lb	0.72 kg
Load Capacity	7.1 lb	3.1 kg
Crash Tested	10g, 22g, 26g	

KEY

(W) Width is measured as 'Y' axis in relation to mounting to the track
 (D) Depth is measured as 'Z' axis in relation to mounting to the track
 (L) Length is measured as 'X' axis in relation to mounting to the track

Pouch Mount Plates

Pouch Mount |

Track Adapter - Pouch Mount Plate

The Track Adapter is used to mount Pouch Mount Plates part numbers, 04800160, 0480155, 0480161 and 0480162 to vehicles walls that utilize iN/TRAXX track. The Track Adapter gives flexibility of location and height when configuring your vehicle.



	IMPERIAL	METRIC
Part Number	0480191	
Dimensions	W 7.2 in D 2.1 in L 22.2 in	W 183 mm D 54 mm L 564 mm
Weight	2.7 lb	1.2 kg
Load Capacity	35 lb	16 kg
Crash Tested	10g, 22g, 26g	

- 0480191 Track Adapters sold separately
- Pouch Mount Plates sold separately
- Designed to be mounted in horizontal track only
- Please refer to separate operators manual

KEY

(W) Width is measured as 'Y' axis in relation to mounting to the track
 (D) Depth is measured as 'Z' axis in relation to mounting to the track
 (L) Length is measured as 'X' axis in relation to mounting to the track

Defibrillator Mounts

Defibrillator Mounts | LifePak 15

The LifePak series of mounting solutions provide the user with a secure and adjustable solution on a vertical or horizontal surface of IN/TRAXX. The multipurpose mount aids in user preference with an option to have both mounts attached to the defibrillator mount should the need arise to move the mount from a horizontal to vertical surface or vice versa.

Defibrillator Wall Mount |

LifePak 15



	IMPERIAL	METRIC
Part Number	0480013	
Dimensions	W 14 in D 12.6 in L 8.3 in	W 356 mm D 321 mm L 210 mm
Weight	14.8 lb	6.7 kg
Crash Tested	10g, 22g, 26g	

- Compatible with LifePak 15 (with or without case)

Defibrillator Swivel Mount |

LifePak 15



	IMPERIAL	METRIC
Part Number	0480014	
Dimensions	W 16.3 in D 12 in L 8.3 in	W 415 mm D 304 mm L 210 mm
Weight	16.3 lb	7.4 kg
Crash Tested	10g, 22g, 26g	

- Compatible with LifePak 15 (with or without case)

KEY

(W) Width is measured as 'Y' axis in relation to mounting to the track
 (D) Depth is measured as 'Z' axis in relation to mounting to the track
 (L) Length is measured as 'X' axis in relation to mounting to the track

Defibrillator Mounts

Defibrillator Wall + Swivel Mount |

LifePak 15



	IMPERIAL	METRIC
Part Number	0480015	
Dimensions	W 16.3 in D 13.5 in L 8.3 in	W 415 mm D 344 mm L 210 mm
Weight	18.3 lb	8.3 kg
Crash Tested	10g, 22g, 26g	

- Compatible with LifePak 15 (with or without case)

KEY

(W) Width is measured as 'Y' axis in relation to mounting to the track
 (D) Depth is measured as 'Z' axis in relation to mounting to the track
 (L) Length is measured as 'X' axis in relation to mounting to the track

Defibrillator Mounts

Defibrillator Mounts | Zoll X Series

The Zoll X series of mounting solutions provide the user with a secure and adjustable solution on a vertical or horizontal surface of iNTRAXX. The multipurpose mount aids in user preference with an option to have both mounts attached to the Defibrillator Mount should the need arise to move the mount from a horizontal to vertical surface or vice versa.

Defibrillator Wall Mount |

Zoll X Series



	IMPERIAL	METRIC
Part Number	0480019	
Dimensions	W 11.1 in D 11.2 in L 8.3 in	W 282 mm D 285 mm L 210 mm
Weight	12.3 lb	5.6 kg
Crash Tested	10g, 22g, 26g	

- Compatible with Zoll X Soft-Case (including rear pouch)

Defibrillator Swivel Mount |

Zoll X Series



	IMPERIAL	METRIC
Part Number	0480020	
Dimensions	W 13.5 in D 10.4 in L 8.3 in	W 342 mm D 265 mm L 210 mm
Weight	17.4 lb	7.9 kg
Crash Tested	10g, 22g, 26g	

- Compatible with Zoll X Soft-Case (including rear pouch)

KEY

(W) Width is measured as 'Y' axis in relation to mounting to the track
 (D) Depth is measured as 'Z' axis in relation to mounting to the track
 (L) Length is measured as 'X' axis in relation to mounting to the track

Defibrillator Mounts

Defibrillator Wall + Swivel Mount |

Zoll X Series



	IMPERIAL	METRIC
Part Number	0480021	
Dimensions	W 13.5 in D 12 in L 8.3 in	W 342 mm D 305 mm L 210 mm
Weight	19.4 lb	8.8 kg
Crash Tested	10g, 22g, 26g	

- Compatible with Zoll X Soft Case (including rear pouch)

Defibrillator - Mount | Zoll iN/TRAXX Wall Mount (Charging)

The iN/TRAXX wall mounted Zoll defibrillator holder is the first of its generation with unparalleled versatility. It is supplied with the easy dock system, charging capability and mounted to iN/TRAXX. Fits with the standard Zoll bag to carry accessories.



	IMPERIAL	METRIC
Part Number	0480197	
Dimensions	W 11.8 in D 4 in L 8.2 in	W 300 mm D 100 mm L 210 mm
Weight	8.1 lb	3.7 kg
Load Capacity	26.4 lb	12 kg
Crash Tested	10g, 20g, 26g	
Standards/Certifications	AS/NZS 4535:1999, FMVSS / CAAS, CEN 1789, SAE J3042	

- Supplied as a kit including Zoll mount, Zoll charge adapter, bolts for SafeMount
- Refer to separate operators manual
- SafeMount is sold separately, either 0480010 or 0480146 SafeMounts can be used
- Zoll bag is not included

KEY

(W) Width is measured as 'Y' axis in relation to mounting to the track
 (D) Depth is measured as 'Z' axis in relation to mounting to the track
 (L) Length is measured as 'X' axis in relation to mounting to the track

Defibrillator Mounts

Defibrillator Mounts |

Zoll X **Direct** Wall Mount (Charging)

The Direct Wall Mounted Zoll X defib holder is the first of its generation. Supplied with the easy dock system, charging capability and mounted direct to any vertical surface, never has a mounting system been so versatile. Fits with the standard Zoll bag to carry all your accessories.



	IMPERIAL	METRIC
Part Number	0480217	
Dimensions	W 11.8 in D 4 in L 8.2 in	W 300 mm D 100 mm L 210 mm
Weight	3.9 lb	2.8 kg
Load Capacity	26.4 lb	12 kg
Crash Tested	10g, 22g, 26g	

- Supplied as a kit including Zoll Mount, Zoll charge adapter and bolts
- Refer to separate operators manual
- Zoll bag is not included

KEY

(W) Width is measured as 'Y' axis in relation to mounting to the track
 (D) Depth is measured as 'Z' axis in relation to mounting to the track
 (L) Length is measured as 'X' axis in relation to mounting to the track

Defibrillator Mounts

Defibrillator Mounts | Corpuls 3

The Corpuls 3 series of mounting solutions provide the user with a secure and adjustable solution on a vertical or horizontal surface of IN/TRAXX. The multipurpose mount aids in user preference with an option to have both mounts attached to the defibrillator mount should the need arise to move the mount from a horizontal to vertical surface or vice versa.

Please note all mounts use the Corpuls mounting adapter charging bracket defibrillator/pacer unit 12 V DC obtained separately. There is also a wall mount for the Corpuls Monitor on a telescopic arm.

Defibrillator Wall Mount |

Corpuls 3



	IMPERIAL	METRIC
Part Number	0480056	
Dimensions	W 7.7 in D 3.9 in L 10.3 in	W 196 mm D 98 mm L 261 mm
Weight	3.5 lb	1.6 kg
Crash Tested	10g, 22g, 26g	

Defibrillator Swivel Mount |

Corpuls 3



	IMPERIAL	METRIC
Part Number	0480094	
Dimensions	W 10.3 in D 9.8 in L 10.3 in	W 261 mm D 250 mm L 262 mm
Weight	4.9 lb	2.2 kg
Crash Tested	10g, 22g, 26g	

KEY

(W) Width is measured as 'Y' axis in relation to mounting to the track

(D) Depth is measured as 'Z' axis in relation to mounting to the track

(L) Length is measured as 'X' axis in relation to mounting to the track

Defibrillator Mounts

Defibrillator Wall + Swivel Mount | Corpuls 3



	IMPERIAL	METRIC
Part Number	0480095	
Dimensions	W 10.3 in D 10.5 in L 10.3 in	W 261 mm D 266 mm L 262 mm
Weight	7.6 lb	3.4 kg
Crash Tested	10g, 22g, 26g	

Defibrillator Wall Mount | Corpuls Monitor



	IMPERIAL	METRIC
Part Number	0480093	
Dimensions	W 7.8 in D 3.9 in L 6.6 in	W 199 mm D 98 mm L 167 mm
Weight	2.9 lb	1.3 kg
Crash Tested	10g, 22g, 26g	

KEY

(W) Width is measured as 'Y' axis in relation to mounting to the track
 (D) Depth is measured as 'Z' axis in relation to mounting to the track
 (L) Length is measured as 'X' axis in relation to mounting to the track

Defibrillator Mounts

Defibrillator Wall Mount |

Physio LP1000 AED

Specifically built for the Physio LP1000, this wall mount provides mounting solutions for the defibrillator into the IN/TRAXX.



	IMPERIAL	METRIC
Part Number	0480084	
Dimensions	W 7.7 in D 2.4 in L 10 in	W 196 mm D 62 mm L 253 mm
Weight	3.1 lb	1.4 kg
Crash Tested	10g, 22g, 26g	

Defibrillator Wall Mount |

ProPaq PD360

This wall mount provides the platform for installation of the Zoll or Hamilton T1 or any other aviation products that use the D360 system. Zoll adapter to fit the PD360 defibrillator. See #0480156 for adapter.



	IMPERIAL	METRIC
Part Number	0480151	
Dimensions	W 5.9 in D 15.1 in L 6.6 in	W 151 mm D 384 mm L 167 mm
Weight	4 lb	1.8 kg
Crash Tested	10g	

• Pictured with #0480156 Zoll adapter. Sold separately

KEY

(W) Width is measured as 'Y' axis in relation to mounting to the track
 (D) Depth is measured as 'Z' axis in relation to mounting to the track
 (L) Length is measured as 'X' axis in relation to mounting to the track

Defibrillator Mounts

Defibrillator Counter Top Mount | D360

The D360 base is designed to be an all purpose mount. In order to use the D360 base with your equipment, you must purchase an equipment specific adapter (sold separately).



	IMPERIAL	METRIC
Part Number	0480184	
Dimensions	W 7.6 in D 1.45 in L 7.2 in	W 195 mm D 37 mm L 185 mm
Weight	1.9 lb	0.89 kg
Crash Tested	10g, 20g	

- Must be used in conjunction with Ferno D30d equipment Specific adapters, sold separately
- Review users manual

Adapter | D360 ProPac/ZOLL

The adapter provides the interface between the mount and the defibrillator.



	IMPERIAL	METRIC
Part Number	0480156	
Dimensions	W 1.6 in D 4.5 in L 7.1 in	W 41 mm D 114 mm L 180 mm
Weight	3.7 lb	1.7 kg
Crash Tested	10g, 22g	

- Compatible with D360 ProPac. Sold separately

KEY

(W) Width is measured as 'Y' axis in relation to mounting to the track
 (D) Depth is measured as 'Z' axis in relation to mounting to the track
 (L) Length is measured as 'X' axis in relation to mounting to the track

Defibrillator Mounts

Defibrillator Counter Top Mount | D360 Zoll Mount Kit

The D360 Zoll/ProPac Complete Mount Kit is designed to secure the defibrillator with the ability to swivel 360 degrees.



	IMPERIAL	METRIC
Part Number	0480185	
Dimensions	W 7.6 in D 2.3 in L 7.2 in	W 195 mm D 60 mm L 185 mm
Weight	2.8 lb	1.3 kg
Crash Tested	10g, 20g	

- Must be used in conjunction with Ferno D360 equipment specific adapter
- Refer to users manual
- Supplied with all the fittings required
- Defibrillator sold separately

KEY

(W) Width is measured as 'Y' axis in relation to mounting to the track
 (D) Depth is measured as 'Z' axis in relation to mounting to the track
 (L) Length is measured as 'X' axis in relation to mounting to the track

Defibrillator Mounts

Defibrillator Wall Mount |

Tempus LS Kit

The Tempus LS wall mount kit provides the solution to fix the Tempus to iN/TRAXX, the LS smart Dock #01-3012 is not included. The kit comprises of one SafeMount, one spacer plate and four fixing set screws.



	IMPERIAL	METRIC
Part Number	0480180	
Dimensions	W 6.4 in D 6.4 in L 7.6 in	W 165 mm D 165 mm L 185 mm
Weight	1.6 lb	0.73 kg
Crash Tested	10g, 20g, 26g	

- Tempus LS Smart Dock #01-3012 sold separately
- Follow instructions on assembly process
- Refer to Tempus specifications of LS Smart Dock and testing certifications

Defibrillator Wall Mount |

Tempus PRO Kit

The Tempus PRO wall mount kit provides the solution to fix the Tempus to iN/TRAXX, the PRO Smart Dock #01-2244 is not included. The kit comprises of one SafeMount and four fixing set screws.



	IMPERIAL	METRIC
Part Number	0480181	
Dimensions	W 5.9 in D 6.7 in L 12.2 in	W 151 mm D 171 mm L 310 mm
Weight	1.3 lb	6.1 kg
Crash Tested	10g, 20g, 26g	

- Tempus PRO Smart Dock sold separately
- Follow instructions on assembly process
- Refer to Tempus specifications of PRO Smart Dock and testing certifications

KEY

(W) Width is measured as 'Y' axis in relation to mounting to the track
 (D) Depth is measured as 'Z' axis in relation to mounting to the track
 (L) Length is measured as 'X' axis in relation to mounting to the track

Defibrillator Mounts

Defibrillator - Mount |

Tempus PRO 360 Swivel Mount

The iNTRAXX 360 degrees swivel mount securely mounts the Tempus PRO and Tempus LS individually or together back to back and is suitable for cabinet mounting. The iNTRAXX system utilizes the Philips powered docs (sold separately).



	IMPERIAL	METRIC
Part Number	0480182	
Dimensions	W 8.1 in D 11.4 in L 6.5 in	W 205 mm D 290 mm L 165 mm
Weight	5.3 lb	2.4 kg
Load Capacity	19.8 lb	9 kg
Crash Tested	10g, 20g, 26g	

- Mount is supplied as a kit including required bolts
- iNTRAXX track is sold separately, select your preference to your application
- For details on Philips Powered docking stations please contact your Philips representative - Sold separately
- Ferno is not responsible of testing claims of OEM mounts

Defibrillator - Mount |

Tempus LS Stacked Adapter

This adapter is used in conjunction with iNTRAXX part number 0480182 bench mount which allows for "double" stacking of the Tempus LS above the Tempus Pro. The iNTRAXX system utilizes the Philips powered docs (sold separately).



	IMPERIAL	METRIC
Part Number	0480183	
Dimensions	W 15.6 in D 5.5 in L 4 in	W 395 mm D 140 mm L 100 mm
Weight	1.3 lb	0.6 kg
Load Capacity	6.6 lb	3 kg
Crash Tested	10g, 20g, 26g	

- Mount is supplied as a kit including required bolts
- For details on Philips Powered docking stations please contact your Philips representative - Sold separately
- Ferno is not responsible of testing claims of OEM mounts

KEY

(W) Width is measured as 'Y' axis in relation to mounting to the track
 (D) Depth is measured as 'Z' axis in relation to mounting to the track
 (L) Length is measured as 'X' axis in relation to mounting to the track

Defibrillator Mounts

Defibrillator - Mount |

Tempus Mounting Kit Only

The Tempus mounting kit gives you multiple mounting options for the Tempus Pro or LS. Options include the iN/TRAXX SafeMounts, swivel mounts, SafeConnect mounts, aviation pole clamp, aviation ProV adapter or aviation D360 mounts. All mounting solutions use the Philips Docking devices (sold separately).



	IMPERIAL	METRIC
Part Number	0480218	
Dimensions	W 6.3 in D 5.1 in L 4 in	W 160 mm D 130 mm L 100 mm
Weight	1.4 lb	0.65 kg
Load Capacity	19.8 lb	9 kg
Crash Tested	10g, 20g, 26g	

- Mount is supplied as a kit including required bolts
- Schiller Powered mounts are sold separately from Schiller
- Ferno is not responsible of testing claims of OEM mounts

KEY

(W) Width is measured as 'Y' axis in relation to mounting to the track
 (D) Depth is measured as 'Z' axis in relation to mounting to the track
 (L) Length is measured as 'X' axis in relation to mounting to the track

Defibrillator Mounts

Defibrillator - Mount |

Zoll AED3 iNTRAXX

The Zoll AED3 mount is for iNTRAXX wall track mounting. Can mount into vertical or horizontal track. Zoll AED3 can be locked into this mount with or without its protective carry case.



	IMPERIAL	METRIC
Part Number	0480149	
Dimensions	W 12.2 in D 9 in L 10.2 in	W 312 mm D 229 mm L 260 mm
Weight	5.7 lb	2.6 kg
Load Capacity	7.7 lb	3.5 kg
Crash Tested	10g, 20g, 26g	

- Can be retained in the mount with or without the Zoll AED Case
- iNTRAXX track mount only
- Can be supplied as a Cabinet Mount 360 degree on special request
- Refer to separate customer drawings for mounting details
- Defibrillator not included

Defibrillator - Mount |

Zoll AED 3 Direct Mount

The Zoll AED3 mount is a direct to wall mounting. No track required. Zoll AED3 can be locked into this mount with or without its protective carry case.



	IMPERIAL	METRIC
Part Number	0480150	
Dimensions	W 12.2 in D 7.5 in L 10.2 in	W 312 mm D 191 mm L 260 mm
Weight	4.1 lb	1.9 kg
Load Capacity	7.7 lb	3.5 kg
Crash Tested	10g, 20g, 26g	

- Can be retained in the mount with or without the Zoll AED Case
- Direct to wall mount only
- Can be supplied as a Cabinet Mount 360 degree on special request
- Refer to separate customer drawings for mounting details
- Defibrillator not included

KEY

(W) Width is measured as 'Y' axis in relation to mounting to the track
 (D) Depth is measured as 'Z' axis in relation to mounting to the track
 (L) Length is measured as 'X' axis in relation to mounting to the track

Defibrillator Mounts

Defibrillator - Mount |

Zoll AED Plus Adaptor Kit

The Zoll AED Plus Adaptor Kit transforms your existing Zoll AED3 mount part numbers 0480149 & 0480150 to take multiple styles of AED's



	IMPERIAL	METRIC
Part Number	0480239	
Dimensions	W 10 in D 2.4 in L 8.7 in	W 255 mm D 60 mm L 220 mm
Weight	0.97 lb	0.44 kg
Crash Tested	10g, 20g, 26g	

- Sold separately
- Supplied complete with bolts and spacers
- Weight is not inclusive of mount fitted too
- Please refer to separate operators manual and assembly instructions
- Ferno is not responsible of testing claims of OEM mounts
- Certification falls under the compliance of the original device mount

Defibrillator - Mount |

AED Mount Wall iNTRAXX

The AED mount is for iNTRAXX wall track mounting. Can mount into vertical or horizontal track. The AED can be locked into this mount with or without its protective carry case.



	IMPERIAL	METRIC
Part Number	0480241	
Dimensions	W 10.2 in D 9 in L 14.4 in	W 260 mm D 229 mm L 367 mm
Weight	6.9 lb	3.1 kg
Load Capacity	7.7 lb	3.5 kg
Crash Tested	10g, 20g, 26g	

- Supplied complete with bolts and spacers to suit each AED
- Can be retained in the mount with or without the AED Case always refer to instructions
- iNTRAXX wall mount only
- Refer to separate customer drawings for mounting details
- Defibrillator not included
- Please refer to separate operators manual
- Ferno is not responsible of testing claims of OEM mounts
- Currently known devices, Zoll AED plus & Mindray BeneHeart D1

KEY

(W) Width is measured as 'Y' axis in relation to mounting to the track
 (D) Depth is measured as 'Z' axis in relation to mounting to the track
 (L) Length is measured as 'X' axis in relation to mounting to the track

Defibrillator Mounts

Defibrillator - Mount |

AED Mount Bolt On

The AED wall mount is a direct to wall mounting. No track required. Listed AED's can be locked into this mount with or without is protective carry case in most cases.



	IMPERIAL	METRIC
Part Number	0480242	
Dimensions	W 10.2 in D 7.5 in L 13.8 in	W 260 mm D 191 mm L 350 mm
Weight	5.3 lb	2.4 kg
Load Capacity	7.7 lb	3.5 kg
Crash Tested	10g, 20g, 26g	

- Supplied complete with bolts and spacers to suit each AED
- Can be retained in the mount with or without the AED Case. Always refer to instructions
- Direct to wall mount only
- Can be supplied as a Cabinet Mount 360 degree on special request
- Refer to separate customer drawings for mounting details
- Defibrillator not included
- Please refer to separate operators manual
- Ferno is not responsible of testing claims of OEM mounts
- Current known devices, Zoll AED plus & Mindray BeneHeart D1

Defibrillator - Mount |

360° Swivel with Rear Vertical Holder

Perfect for mounting vertical plates to attach devices or other products. Compatible with Ferno PacRacs, iN/TRAXX bench track, rotational through 360° with multiple lock locations.



	IMPERIAL	METRIC
Part Number	0480237	
Dimensions	W 5 in D 11.6 in L 6.7 in	W 125 mm D 291 mm L 167 mm
Weight	18.1 lb	8.2 kg
Load Capacity	55 lb	25 kg
Crash Tested	10g, 20g, 26g	

KEY

- (W) Width is measured as 'Y' axis in relation to mounting to the track
- (D) Depth is measured as 'Z' axis in relation to mounting to the track
- (L) Length is measured as 'X' axis in relation to mounting to the track

Defibrillator Mounts

ACC - Mount | Safe Mount to Aviation D360 Adapter Plate

The Safemount to Aviation D360 Adapter Plate allows the D360 to be relocatable on iN/TRAXX track. Once the adapter is used to mount the D360 to a SafeMount it can be bench or PacRac mounted.



	IMPERIAL	METRIC
Part Number	0480198	
Dimensions	W 5.9 in D 0.31 in L 7.5 in	W 151 mm D 8 mm L 193 mm
Weight	0.4 lb	0.19 kg
Crash Tested	10g, 20g, 26g	

- Plate is supplied as a kit including bolts
- Safemount and D360 not included
- Safemount and D360 are sold separately
- Refer to separate operators manual for details
- Certification falls under the compliance of the SafeMount and Aviation D360 components

Defibrillator - Mount |

G2 Schiller Defiguard Touch 7

The New iN/TRAXX G2 Schiller Defiguard Touch 7 wall mount adapts the Schiller standard and slim ambulance bracket with either the DC/DC or AC/DC chargers. Chargers are not included with this mount.



	IMPERIAL	METRIC
Part Number	0480224	
Dimensions	W 7.6 in D 2.2 in L 8 in	W 192 mm D 56 mm L 204 mm
Weight	16.9 lb	7.7 kg
Load Capacity	55 lb	25 kg
Crash Tested	10g, 20g, 26g	

- Mount is supplied as a kit including SafeMount and required bolts
- Schiller Powered mounts are sold separately from Schiller
- Ferno is not responsible of testing claims of OEM mounts

KEY

(W) Width is measured as 'Y' axis in relation to mounting to the track
 (D) Depth is measured as 'Z' axis in relation to mounting to the track
 (L) Length is measured as 'X' axis in relation to mounting to the track

Oxygen Mount |

CD O2 Single Cylinder Mount

The CD O2 Single Cylinder Mount is unique in its design as it can be mounted to the iN/TRAXX to carry a single cylinder or optioned up to carry 2 or 3 cylinders.



	IMPERIAL	METRIC
Part Number	0480163	
Dimensions	W 19.7 in D 5.1 in L 6.6 in	W 500 mm D 130 mm L 167 mm
Weight	6 lb	2.7 kg
Crash Tested	10g, 22g, 26g	

- Weight does not include oxygen cylinders
- Mount is compatible with Euro size "C" oxygen bottle, Inhalo oxygen bottle or US Jumbo "D" sold separately
- Please refer to separate operators manual

Oxygen Mount |

CD O2 Mount Bracket Only

The CD O2 Mount bracket is sold separately. Single sale allows the ability to build your system. Certification is covered only under the complete assembly. Please refer to the user manual.



	IMPERIAL	METRIC
Part Number	0480127	
Dimensions	W 19.7 in D 5.6 in L 0.39in	W 500 mm D 142 mm L 10 mm
Weight	2.2 lb	1 kg
Crash Tested	10g, 22g, 26g	

- Please refer to separate operators manual

KEY

(W) Width is measured as 'Y' axis in relation to mounting to the track
 (D) Depth is measured as 'Z' axis in relation to mounting to the track
 (L) Length is measured as 'X' axis in relation to mounting to the track

Oxygen

Oxygen Mount |

CD O2 Cylinder Bracket Only

The CD O2 Mount bracket is sold separately. Single sale allows the ability to build your system. Certification is covered only under the complete assembly.



	IMPERIAL	METRIC
Part Number	0480128	
Dimensions	W 19.7 in D 5.6 in L 0.39 in	W 500 mm D 142 mm L 10 mm
Weight	2.2 lb	1 kg
Crash Tested	10g, 22g, 26g	

- Weight does not include oxygen cylinder
- Mount is compatible with Euro size "C" oxygen bottle, Inhalo oxygen bottle or US Jumbo "D" sold separately
- Please refer to separate operators manual

Oxygen Mount | Single

The Single Oxygen Mount is designed to support a D or Jumbo D size oxygen bottle.



	IMPERIAL	METRIC
Part Number	0480034 <i>(While Supplies Last)</i>	
Dimensions	W 18.9 in D 8.3 in L 6.6 in	W 480 mm D 210 mm L 167 mm
Weight	4 lb	2.2 kg
Crash Tested	10g, 22g, 26g	

- Weight does not include oxygen cylinder.
- Compatible with "D" or Jumbo "D" tanks. Sold separately.

KEY

(W) Width is measured as 'Y' axis in relation to mounting to the track
 (D) Depth is measured as 'Z' axis in relation to mounting to the track
 (L) Length is measured as 'X' axis in relation to mounting to the track

Ventilator Mounts

Ventilator Mount | Impact 731

Used to mount an Impact 731 ventilator to a SafeMount with connector.



	IMPERIAL	METRIC
Part Number	0480038	
Dimensions	W 7.8 in D 2.5 in L 6.6 in	W 199 mm D 64 mm L 167 mm
Weight	2 lb	0.9 kg
Crash Tested	10g, 22g, 26g	

• Also compatible with Zoll Z Ventilator.

Ventilator Mount |

Hamilton T1 Wall Mount Bracket

The new iN/TRAXX Hamilton T1 wall mount bracket adapts the Hamilton supplied device mounts to the iN/TRAXX wall. The bracket can also accept the aviation D360 bench mount which allows most D360 devices to be mounted on iN/TRAXX wall. Please refer to customer drawing as all parts sold separately.



	IMPERIAL	METRIC
Part Number	0480139	
Dimensions	W 9.5 in D 4 in L 8.3 in	W 242 mm D 100 mm L 210 mm
Weight	1.1 lb	0.5 kg
Crash Tested	10g, 22g, 26g	

- Mount is supplied as a kit including required bolts
- Hamilton mounts sold separately from Schiller
- Safemount to be orderd separately
- Ferno is not responsible of testing claims of OEM mounts

KEY

(W) Width is measured as 'Y' axis in relation to mounting to the track
 (D) Depth is measured as 'Z' axis in relation to mounting to the track
 (L) Length is measured as 'X' axis in relation to mounting to the track

Ventilator Mounts

Ventilator Mounts |

D360 Hamilton Mount Kit

The D360 Hamilton Mount Kit is designed to secure the ventilator and the ability to swivel it 360 degrees.



	IMPERIAL	METRIC
Part Number	0480186	
Dimensions	W 8.2 in D 12.8 in L 7.7 in	W 209.5 mm D 327 mm L 197 mm
Weight	3.5 lb	1.5 kg
Crash Tested	10g, 22g	

- Must be used in conjunction with Ferno D360 equipment specific adapter
- Refer to users manual
- Supplied with all the fittings required
- Defibrillator sold separately

Ventilator Mounts |

D360 Hamilton Adapter

The D360 Hamilton Adapter is designed to secure the ventilator as well as giving the ability to swivel it 360 degrees. This part operates with the 0480184 or the 0480151 D360 mounts.



	IMPERIAL	METRIC
Part Number	0480187	
Dimensions	W 8.2 in D 10.5 in L 7.7 in	W 209.5 mm D 266.7 mm L 197 mm
Weight	1.4 lb	0.68 kg
Crash Tested	10g, 22g	

- Must be used in conjunction with Ferno D360 equipment specific mount
- Refer to users manual
- Supplied with all the fittings required
- Defibrillator sold separately

KEY

(W) Width is measured as 'Y' axis in relation to mounting to the track
 (D) Depth is measured as 'Z' axis in relation to mounting to the track
 (L) Length is measured as 'X' axis in relation to mounting to the track

Ventilator Mounts

Mounting Plate | Pneupac

Specifically designed to mount the PneuPac Ventilator.



	IMPERIAL	METRIC
Part Number	0480074	
Dimensions	W 7.8 in D 2.4 in L 6.6 in	W 199 mm D 60 mm L 167 mm
Weight	2.4 lb	1.1 kg
Crash Tested	10g, 22g, 26g	

Ventilator Mount | Weinmann Lifebase 3NG

Fits the Weinmann wall mounting Base Station 3 NG only.



	IMPERIAL	METRIC
Part Number	0480159	
Dimensions	W 11 in D 15.9 in L 2.2 in	W 280 mm D 404 mm L 56 mm
Weight	4.8 lb	2.2 kg
Crash Tested	10g, 20g, 26g	

• Weinmann Base Station 3 NG fitting instructions must be followed

KEY

(W) Width is measured as 'Y' axis in relation to mounting to the track
 (D) Depth is measured as 'Z' axis in relation to mounting to the track
 (L) Length is measured as 'X' axis in relation to mounting to the track

Ventilator Mounts

Ventilator Mounts | Draeger

The Draeger ventilator can be attached to either a swivel mount or wall mount and designed specifically for the Draeger.

Wall Ventilator Mount |

Draeger



	IMPERIAL	METRIC
Part Number	0480109	
Dimensions	W 11.2 in D 10.2 in L 9.5 in	W 285 mm D 259 mm L 243 mm
Weight	6.9 lb	3.1 kg
Crash Tested	10g, 22g, 26g	

Swivel Ventilator Mount |

Draeger



	IMPERIAL	METRIC
Part Number	0480110	
Dimensions	W 13.8 in D 9.9 in L 9.6 in	W 351 mm D 251 mm L 243 mm
Weight	8.7 lb	3.9 kg
Crash Tested	10g, 22g, 26g	

KEY

(W) Width is measured as 'Y' axis in relation to mounting to the track
 (D) Depth is measured as 'Z' axis in relation to mounting to the track
 (L) Length is measured as 'X' axis in relation to mounting to the track

Suction Mounts

Suction Unit Mount | Laerdal

Fits the Laerdal Suction Unit and requires the LSU wall bracket.



	IMPERIAL	METRIC
Part Number	0480042	
Dimensions	W 6.8 in D 2.2 in L 7.5 in	W 173 mm D 57 mm L 190 mm
Weight	2.6 lb	1.2 kg
Load Capacity	27.6 lb	12.5 kg
Crash Tested	10g, 22g, 26g	

- Requires LSU Wall Bracket (with or without power cord).

Suction Unit Mount | Laerdal LCSU4

The New iN/TRAXX Laerdal LCSU4 can be wall mounted or bench mounted using the same kit. The kit encompasses the blue wired Laerdal LCSU standard frame either with or without the larger canister. The 0480048 kit comes with everything you require including the SafeMount.



	IMPERIAL	METRIC
Part Number	0480048	
Dimensions	W 10 in D 10 in L 6.9 in	W 255 mm D 254 mm L 176 mm
Weight	8 lb	3.6 kg
Crash Tested	10g, 22g, 26g	

- Mount is supplied as a kit including SafeMount and required bolts
- Laerdal LCSU4 is sold separately from Laerdal
- Follow iN/TRAXX instructions on assembly

KEY

(W) Width is measured as 'Y' axis in relation to mounting to the track
 (D) Depth is measured as 'Z' axis in relation to mounting to the track
 (L) Length is measured as 'X' axis in relation to mounting to the track

Suction Mounts

Suction Unit Mount | SSCOR

Fits the SSCOR Suction Unit only.



	IMPERIAL	METRIC
Part Number	0480043	
Dimensions	W 5.9 in D 2.4 in L 7.9 in	W 151 mm D 60 mm L 200 mm
Weight	2.6 lb	1.2 kg
Crash Tested	10g, 22g, 26g	

Suction Mount | Combo Adapter Mount

Combo adapter plate is able to mount the following equipment and comes complete with the bolts in each kit. Mounts:

- MeduMat Ventilator
- Weinmann Suction Unit
- Weinmann Base 1NG Suction Unit



	IMPERIAL	METRIC
Part Number	0480199	
Dimensions	W 6.4 in D 2.2 in L 6.6 in	W 163 mm D 57 mm L 167 mm
Weight	2.8 lb	1.25 kg
Crash Tested	10g, 22g, 26g	
Standards/ Certifications	AS/NZS 4535:1999, FMVSS / CAAS, CEN 1789, SAE J3042	

- Comes complete with Safe Mount
- Please follow fitment instructions
- Device mountings sold separately

KEY

(W) Width is measured as 'Y' axis in relation to mounting to the track
 (D) Depth is measured as 'Z' axis in relation to mounting to the track
 (L) Length is measured as 'X' axis in relation to mounting to the track

Suction Mounts

Suction Unit Mount |

SAM e.p.s (MGE)

This adapter bracket attaches the SAM e.p.s. wall bracket to the iN/TRAXX system via a SafeMount 0480146. The pack for the SAM's suction unit contains the adapter plate and necessary hardware.



	IMPERIAL	METRIC
Part Number	0480169	
Dimensions	W 5.1 in D 0.39 in L 9.7 in	W 130 mm D 10 mm L 247 mm
Weight	6 lb	2.7 kg
Load Capacity	0.8 lb	0.4 kg
Crash Tested	10g, 20g, 26g	

- Adapter can only be used in conjunction with the 0480146 SafeMount
- Refer to separate operators manual
- SafeMount not included
- SafeMount sold separately

Suction Unit Mount |

Hersill V7 Plus B Emergency

Fits the Hersill V7 + B Emergency



	IMPERIAL	METRIC
Part Number	0480124	
Dimensions	W 5.9 in D 1.9 in L 6.6 in	W 151 mm D 48 mm L 167 mm
Weight	2.3 lb	1.1 kg
Load Capacity	0.8 lb	0.4 kg
Crash Tested	10g, 20g, 26g	

- The 0480124 comes complete with Safemount.
- The follow fitment instructions
- Device mountings sold separately

KEY

(W) Width is measured as 'Y' axis in relation to mounting to the track
 (D) Depth is measured as 'Z' axis in relation to mounting to the track
 (L) Length is measured as 'X' axis in relation to mounting to the track

Suction Mounts

Suction Unit Mount | Askir

The New iNTRAXX Askir Suction mount 0480223 is a direct wall mount. By adding other iNTRAXX mounting solutions, the 0480223 can then be mounted to iNTRAXX by either wall, bench or swivel.



	IMPERIAL	METRIC
Part Number	0480223	
Dimensions	W 10.4 in D 7.9 in L 4.1 in	W 265 mm D 200 mm L 105 mm
Weight	1.6 lb	0.73 kg
Load Capacity	8.8 lb	4 kg
Crash Tested	10g, 22g, 26g	

- iNTRAXX wall mount only
 - Refer to separate customer drawings for mounting details
 - Please refer to separate operators manual
- Mount accepts:
- CA MI Askir 30 Suction Pump
 - CA-MI Askir 36BR Suction Pump

Suction Mount | Askir iNTRAXX Mount

The New iNTRAXX Askir Suction mount 0480233 is an intraxx wall mount. By adding other iNTRAXX mounting solutions the 0480233 can then be mounted to iNTRAXX by either wall, bench or swivel.



	IMPERIAL	METRIC
Part Number	0480233	
Dimensions	W 10.4 in D 9.1 in L 6.1 in	W 265 mm D 230 mm L 155 mm
Weight	3.3 lb	1.5 kg
Load Capacity	8.8 lb	4 kg
Crash Tested	10g, 22g, 26g	
Standards/ Certifications	AS/NZS 4535:1999, FMVSS / CAAS, CEN 1789, SAE J3042	

- iNTRAXX mount only
 - Refer to separate customer drawings for mounting details
 - Please refer to separate operators manual
- Mount accepts:
- CA MI Askir 30 Suction Pump
 - CA-MI Askir 36BR Suction Pump

KEY

(W) Width is measured as 'Y' axis in relation to mounting to the track
 (D) Depth is measured as 'Z' axis in relation to mounting to the track
 (L) Length is measured as 'X' axis in relation to mounting to the track

Pole & Rail Mounts

Pole Mounts

The Single, Double and Vertical Pole mounts provide an ergonomic solution for mounting devices that have a clamp attachment fitting. The Safe Working Load (SWL) of the Pole/Medrail is the SWL of the SafeMount.

Pole Mount | Single



	IMPERIAL	METRIC
Part Number	0480080	
Dimensions	W 8.1 in D 5.5 in L 6.6 in	W 206 mm D 140 mm L 167 mm
Weight	3.6 lb	1.62 kg
Crash Tested	10g, 22g, 26g	

Pole Mount | Double



	IMPERIAL	METRIC
Part Number	0480081	
Dimensions	W 12.6 in D 4.1 in L 6.6 in	W 320 mm D 103 mm L 167 mm
Weight	3.7 lb	1.7 kg
Crash Tested	10g, 22g, 26g	

Pole Mount | Vertical



	IMPERIAL	METRIC
Part Number	0480112	
Dimensions	W 5.9 in D 10 in L 6.6 in	W 151 mm D 255 mm L 167 mm
Weight	2.8 lb	1.29 kg
Crash Tested	10g, 22g, 26g	

KEY

(W) Width is measured as 'Y' axis in relation to mounting to the track
 (D) Depth is measured as 'Z' axis in relation to mounting to the track
 (L) Length is measured as 'X' axis in relation to mounting to the track

Pole & Rail Mounts

Medrail

Similar to the Pole Mounts the Medrail supports equipment already equipped with a Medrail style mount in either the 25 or 30mm rail size. The SWL of the Pole/Medrail is the SWL of the SafeMount.

Medrail Mount | 25mm



	IMPERIAL	METRIC
Part Number	0480082	
Dimensions	W 5.9 in D 3.2 in L 12 in	W 151 mm D 81 mm L 305 mm
Weight	3.1 lb	1.4 kg
Crash Tested	10g, 22g, 26g	

Medrail Mount | 30mm



	IMPERIAL	METRIC
Part Number	0480091	
Dimensions	W 5.9 in D 3.2 in L 12 in	W 151 mm D 81 mm L 305 mm
Weight	3.2 lb	1.44 kg
Crash Tested	10g, 22g, 26g	

KEY

(W) Width is measured as 'Y' axis in relation to mounting to the track
 (D) Depth is measured as 'Z' axis in relation to mounting to the track
 (L) Length is measured as 'X' axis in relation to mounting to the track

Accessory Mounts

CPR Mount

The new iN/TRAXX CPR mount is a versatile wall mount that can be adjusted to fit different CPR devices that are in their bags/cases. Currently fits Lucas, Corpuls, and LifeLine ARM XR CPR devices.



	IMPERIAL	METRIC
Part Number	0480238	
Dimensions	W 22.9-24.3 in D 12.6 in L 20.7 in	W 582-616 mm D 320 mm L 526 mm
Weight	7 lb	3.2 kg
Load Capacity	26.5 lb	12 kg
Crash Tested	10g, 20g, 26g	

- iN/TRAXX mount only
- Refer to separate customer drawings for mounting details
- Please refer to separate operators manual

Mount accepts:

- Corpuls CPR in storage case
- LUCAS 3 in storage case
- Defibtech LifeLine ARM XR in storage case

KEY

(W) Width is measured as 'Y' axis in relation to mounting to the track

(D) Depth is measured as 'Z' axis in relation to mounting to the track

(L) Length is measured as 'X' axis in relation to mounting to the track

Accessory Mounts

Litter Arm | Multipurpose

The litter arms, when used as a pair, provide a compact solution to supporting a variety of products including Ferno and Junkin Litters. Litter arm is sold individually.



	IMPERIAL	METRIC
Part Number	0480036	
Dimensions	W 7.2 in D 28.7 in L 6.6 in	W 182 mm D 730 mm L 167 mm
Weight	13.2 lb	6 kg
Load Capacity	353 lb (per pair)	160 kg (per pair)

Compatible Litters

FERNO Products:

- Najo Backboards
- Millennia Backboards
- Scoop EXL Stretcher
- Model 9
- Model 11
- Model 12
- Model 108-D Pole Stretcher
- Model 108 (All Models)
- SOF-L Special Operations Forces Litter

Junkin Safety Products:

- Medical Core Pole Stretchers
- Easy Fold Wheeled Stretcher
- Easy Fold with Elevating Headrest
- Easy Fold Wheeled Stretcher with Elevating Headrest & Handle

Litter Arm | Ratchet Style Multipurpose

The New iNTRAXX ratchet style litter arm is 10g compliant when used in pairs on horizontal iNTRAXX track. The litter arms provide a compact solution to supporting a variety of products including Ferno, Nato and Junkin Litters. Litter arm is sold individually.



	IMPERIAL	METRIC
Part Number	0480220	
Dimensions	W 6.6 in D 27 in L 7.2 in	W 167 mm D 685 mm L 182 mm
Weight	13.2 lb	6 kg
Load Capacity	353 lb (per pair)	160 kg (per pair)
Crash Tested	10g	

Compatible Litters

FERNO Products:

- Najo Backboards
- Millennia Backboards
- Scoop EXL Stretcher
- Model #9
- Model #11
- Model #12
- Model #108-D Pole Stretcher
- Model #108 (All Models)
- SOF-L Special Operations Forces Litter
- All Nato Litters

Junkin Safety Products:

- Medical Core Pole Stretchers
- Easy Fold Wheeled Stretcher
- Easy Fold with Elevating Headrest
- Easy Fold Wheeled Stretcher with Elevating Headrest & Handle

KEY

(W) Width is measured as 'Y' axis in relation to mounting to the track
 (D) Depth is measured as 'Z' axis in relation to mounting to the track
 (L) Length is measured as 'X' axis in relation to mounting to the track

Accessory Mounts

Litter Arm | Litter Arm Mount
Talon 90C

Comprising of a pair the litter arms provide a compact solution to support the Talon 90C litter on an iN/TRAXX wall.



	IMPERIAL	METRIC
Part Number	0480037	
Dimensions	W 5 in D 28.7 in L 5 in	W 150 mm D 730 mm L 150 mm
Weight	13.2 lb	6 kg
Load Capacity	352.7 lb (per pair)	160 kg (per pair)

Sold individually

- Compatible with Talon11 90C, Talon 81C, Ferno 108T
- Sold individually
- Litters sold separately

Litter Arm | Board Lock

The New iN/TRAXX Board Lock is used in conjunction with the iN/TRAXX Litter arms. The board lock offers a quick, no fuss application to position and retain spine boards to the litter arms. Recommended to have a board lock for every litter arm.



	IMPERIAL	METRIC
Part Number	0480215	
Dimensions	W 1.7 in D 1.6 in L 6.3 in	W 42 mm D 40 mm L 160 mm
Weight	0.44 lb	0.2 kg
Crash Tested	10g	
Standards/ Certifications	AS/NZS 4535:1999, CEN 1789	

- Compatible to iN/TRAXX litter arms only
 - Refer to separate customer drawings for mounting details
 - Please refer to separate operators manual
- Compatible to 10G on the following litter arms:
- Litter Arm 0480036
 - Litter Arm 0480220

KEY

(W) Width is measured as 'Y' axis in relation to mounting to the track
 (D) Depth is measured as 'Z' axis in relation to mounting to the track
 (L) Length is measured as 'X' axis in relation to mounting to the track

Accessory Mounts

Litter Arm | Light

5VDC LED strip light with controller housed in an aluminum extrusion with an opaque defused cover. Adheres to the under side of the Talon 0480037 Litter arm, it provides a safe and secure light for the patient and attendant. The light includes a controller to change settings that can be easily set and remain in memory even after disconnection from power.



	IMPERIAL	METRIC
Part Number	0480179	
Dimensions	W 0.7 in D 0.4 in L 19.9 in	W 18 mm D 10 mm L 505 mm
Weight	0.19 lb	0.09 kg

- Order separately to Litter Arm
- 5V USB only
- Colors: Red, Blue, White, Green

Spacer | Litter Arm Spacer

Used in the 0480036 Litter Arm to space out the litter for security when latched.



	IMPERIAL	METRIC
Part Number	0480168	
Dimensions	W 1.4 in D 1.8 in L 2 in	W 36 mm D 45 mm L 50 mm
Weight	0.11 lb	0.05 kg
Crash Tested	10g, 22g, 26g	

- Required for NATO and Talon Litters

KEY

(W) Width is measured as 'Y' axis in relation to mounting to the track
 (D) Depth is measured as 'Z' axis in relation to mounting to the track
 (L) Length is measured as 'X' axis in relation to mounting to the track

Accessory Mounts

Litter Arm | Loading Wedge

The Litter Arm Loading Wedge provides a seamless transition when loading a compatible litter into the litter arm.



	IMPERIAL	METRIC
Part Number	0480153	
Dimensions	W 1.8 in D 7.7 in L 2 in	W 45 mm D 195 mm L 52 mm
Weight	0.8 lb	0.37 kg

Ram Adapter | 2.5 SMC
SafeMount Connector

The Ram Adapter is the interface between the SafeMount connector and the Ram arm.



	IMPERIAL	METRIC
Part Number	0480047	
Dimensions	W 2.5 in D 0.3 in L 2.5 in	W 64 mm D 7 mm L 64 mm
Weight	0.1 lb	0.06 kg
Crash Tested	10g, 22g, 26g	

KEY

(W) Width is measured as 'Y' axis in relation to mounting to the track
 (D) Depth is measured as 'Z' axis in relation to mounting to the track
 (L) Length is measured as 'X' axis in relation to mounting to the track

Accessory Mounts

Work Tray | With Arm

The work tray provides a stable area for medics to place quick grab items when attending to a patient. The arm provides maneuverability to the desired position.



	IMPERIAL	METRIC
Part Number	0480039	
Dimensions	W 7.8 in D 12.7 in L 12.7 in	W 199 mm D 323 mm L 323 mm
Weight	3 lb	1.4 kg
Crash Tested	10g, 22g, 26g	

- Safe working load for the tray is 6 lb/3kg
- Secure loose items during transport
- Recommend use in the stationary position only

Work Tray | Hinged 2.0

The Work Tray – Hinged has the ability to be installed anywhere on the IN/TRAXX Track. The work tray provides a stable area for medics to place quick grab items when attending to a patient.



	IMPERIAL	METRIC
Part Number	0480123	
Dimensions	W 4.6 in D 14.3 in L 12.7 in	W 117 mm D 362 mm L 323 mm
Weight	2.4 lb	1.1 kg
Crash Tested	10g, 22g, 26g	

- Safe working load for the tray is 6 lb/3kg
- Secure loose items during transport
- Recommend use in the stationary position only

KEY

(W) Width is measured as 'Y' axis in relation to mounting to the track
 (D) Depth is measured as 'Z' axis in relation to mounting to the track
 (L) Length is measured as 'X' axis in relation to mounting to the track

Accessory Mounts

SafeMount |

Tablet General B101UC

The General Tablet Mount allows various Tablets or Devices to be mounted to iN/TRAXX with position adjustment.



	IMPERIAL	METRIC
Part Number	0480190	
Dimensions	W 5.9 in D 9.3 in L 6.6 in	W 151 mm D 235 mm L 167 mm
Weight	2.3 lb	1.1 kg
Load Capacity	4 lb	1.9 kg
Crash Tested	10g, 22g, 26g	

KEY

(W) Width is measured as 'Y' axis in relation to mounting to the track

(D) Depth is measured as 'Z' axis in relation to mounting to the track

(L) Length is measured as 'X' axis in relation to mounting to the track

Accessory Mounts

Swivel SafeMount |

360° "Long Handle"

Perfect for mounting equipment to Ferno PacRacs &/or iN/TRAXX bench track, rotational through 360° and multiple lock locations.



	IMPERIAL	METRIC
Part Number	0480164	
Dimensions	W 2.5 in D 11.4 in L 6.5 in	W 66 mm D 291 mm L 167 mm
Weight	18 lb	8.1 kg
Load Capacity	55.1 lb	25 kg
Crash Tested	10g, 22g, 26g	

Swivel SafeMount |

360° "Short Handle"

Perfect for mounting equipment to Ferno PacRacs and/or iN/TRAXX bench track, rotational through 360° and multiple lock locations.



	IMPERIAL	METRIC
Part Number	0480165	
Dimensions	W 2.5 in D 9.8 in L 6.5 in	W 66 mm D 250 mm L 167 mm
Weight	17.9 lb	8.1 kg
Load Capacity	55.1 lb	25 kg
Crash Tested	10g, 22g, 26g	

KEY

(W) Width is measured as 'Y' axis in relation to mounting to the track
 (D) Depth is measured as 'Z' axis in relation to mounting to the track
 (L) Length is measured as 'X' axis in relation to mounting to the track

Accessory Mounts

Swivel Mount |

Rear Holder

Used on the 04800164 and 0480165 swivel SafeMounts the rear vertical holder assist to hold aftermarket mounting brackets/ systems.



	IMPERIAL	METRIC
Part Number	0480170	
Dimensions	W 3.3 in D 0.9 in L 1.3 in	W 85 mm D 25 mm L 35 mm
Weight	.22 lb	.1 kg
Crash Tested	10g, 20g, 26g	

ACC Mount | Trash Bin Mount

Trash Bin Mount has the ability to be installed anywhere on the IN/TRAXX track. Provides a receptacle for the general waste and trash during patient treatments.



	IMPERIAL	METRIC
Part Number	0480044	
Dimensions	W 10.3 in D 9.2 in L 10.6 in	W 262 mm D 234 mm L 268 mm
Weight	4.4 lb	2 kg
Load Capacity	2.2 lb	1 kg

- Complete with Trash Bin (0480075)
- 90-Day Warranty on Trash Bin

KEY

(W) Width is measured as 'Y' axis in relation to mounting to the track
 (D) Depth is measured as 'Z' axis in relation to mounting to the track
 (L) Length is measured as 'X' axis in relation to mounting to the track

Accessory Mounts

ACC Mount | Trash Bin Mount

Trash Bin Mount has the ability to be installed anywhere on the iN/TRAXX track. Provides a receptacle for the general waste and trash during patient treatments.



	IMPERIAL	METRIC
Part Number	0480249	
Dimensions	W 11.5 in D 7.6 in L 9.7 in	W 288 mm D 191 mm L 242 mm
Weight	4.4 lb	2 kg
Load Capacity	2.2 lb	1 kg

- Complete with Trash Bin (0480251)
- 90-Day Warranty on Trash Bin

ACC - Mount |

Trash Hamper - Ophart

Trash Bin Mount is a great alternative, as it is small and secure and can be mounted in both horizontal and vertical track.



	IMPERIAL	METRIC
Part Number	0480106	
Dimensions	W 9.4 in D 11.81 in L 6.1 in	W 240 mm D 300 mm L 155 mm
Weight	2.2 lb	1 kg
Load Capacity	6.6 lb	3 kg
Crash Tested	10g, 20g, 26g	

- Plate is supplied as a kit including the bolts.
- Refer to separate operators manual
- Note: Ophart Bin is not supplied, purchase separately from your local Ophart supplier or alternatively, contact the FERNO team for assistance

KEY

(W) Width is measured as 'Y' axis in relation to mounting to the track
 (D) Depth is measured as 'Z' axis in relation to mounting to the track
 (L) Length is measured as 'X' axis in relation to mounting to the track

Accessory Mounts

Sharps Bin Mount

The Sharps Bin mount has the ability to be installed anywhere on the iN/TRAXX Track. The Sharps Bin provides a safe area to dispose of sharps with an anti-return feature to ensure no sharps can return from the bin.



	IMPERIAL	METRIC
Part Number	0480045 <i>(While Supplies Last)</i>	
Dimensions	W 13.8 in D 6.8 in L 13 in	W 350 mm D 173 mm L 330 mm
Weight	4.9 lb	2.2 kg
Load Capacity	2.2 lb	1 kg
Crash Tested	10g, 22g, 26g	

- Complete with Sharps Bin (0480076)
- 90-Day Warranty on Sharps Bin

Sharps Bin Mount | Sharpsafe

The Sharpsafe mount is for attaching the “Sharpsafe” brand of sharps bins to the iN/TRAXX wall system. This mount can retain the 2 ltr, 3 ltr, 4 ltr, 7 ltr and 9 ltr Sharpsafe bins.



	IMPERIAL	METRIC
Part Number	0480141	
Dimensions	W 2.5 in D 7 in L 11.6 in	W 66 mm D 178 mm L 295 mm
Weight	1.6 lb	0.75 kg
Crash Tested	10g, 22g, 26g	

- The 0480141 is only compliance with EN, SAE and AUS/NZ standard retaining the 2 ltr, 3 ltr, 4 ltr Sharpsafe bins
- The sharps bins must be purchased separately from your Sharpsafe distributor
- The 0480141 is sold complete with the retention strap and plastic Sharpsafe mount

KEY

(W) Width is measured as 'Y' axis in relation to mounting to the track
 (D) Depth is measured as 'Z' axis in relation to mounting to the track
 (L) Length is measured as 'X' axis in relation to mounting to the track

Accessory Mounts

Sharps Bin Mount |

1.4LT Sharps Mount

The 1.4LT Sharps Mount allows the sharps container to fit into a horizontal or vertical track with retention straps that secure the sharps container. The mount is simple to clean and decontaminate.



	IMPERIAL	METRIC
Part Number	0480195	
Dimensions	W 6.3 in D 4.3 in L 11.8 in	W 160 mm D 110 mm L 300 mm
Weight	2.4 lb	1.1 kg
Load Capacity	4.4 lb	2 kg
Crash Tested	10g, 22g, 26g	

- Mount is supplied as a kit including required bolts
- Sharps containers sold separately by most global medical suppliers
- Ferno is not responsible of testing claims of OEM mounts.
- iN/TRAXX track sold separately

Sharps Bin Mount

The Sharps Bin mount has the ability to be installed anywhere on the iN/TRAXX Track. The Sharps Bin provides a safe area to dispose of sharps with an anti-return feature to ensure no sharps can return from the bin.



	IMPERIAL	METRIC
Part Number	0480248	
Dimensions	W 11.5 in D 7.6 in L 9.7 in	W 288 mm D 191 mm L 242 mm
Weight	4.4 lb	2 kg
Load Capacity	2.2 lb	1 kg
Crash Tested	10g, 22g, 26g	

- Complete with Sharps Bin (0480250)
- 90-Day Warranty on Sharps Bin

KEY

(W) Width is measured as 'Y' axis in relation to mounting to the track
 (D) Depth is measured as 'Z' axis in relation to mounting to the track
 (L) Length is measured as 'X' axis in relation to mounting to the track

Accessory Mounts

ACC - Mount | Glovebox Single

The Glovebox Single holder accepts and secures most sizes of standard glove boxes. Designed to be easily cleaned, load and mount using our rotating lock knobs to secure to the iN/TRAXX track.



	IMPERIAL	METRIC
Part Number	0480099	
Dimensions	W 10.1 in D 4.4 in L 9.7 in	W 259 mm D 114 mm L 247 mm
Weight	2 lb	0.93 kg
Load Capacity	2.2 lb	1 kg
Crash Tested	10g, 22g, 26g	

- Glovebox is designed for horizontal track mounting only
- Please refer to separate operators manual

ACC - Mount | Glovebox Triple

The Glovebox Triple holder accepts and secures most sizes of standard glove boxes. Designed to be easily cleaned, load and mount using our rotating lock knobs to secure to the iN/TRAXX track.



	IMPERIAL	METRIC
Part Number	0480100	
Dimensions	W 15.5 in D 4.4 in L 14.4 in	W 394 mm D 114 mm L 367 mm
Weight	3.4 lb	1.5 kg
Load Capacity	6.6 lb	3 kg
Crash Tested	10g, 22g, 26g	

- Glovebox is designed for horizontal track mounting only
- Please refer to separate operators manual

KEY

(W) Width is measured as 'Y' axis in relation to mounting to the track
 (D) Depth is measured as 'Z' axis in relation to mounting to the track
 (L) Length is measured as 'X' axis in relation to mounting to the track

Accessory Mounts

ACC - Mount | Glovebox Quad

The Glovebox Quad holder accepts and secures most sizes of standard glove boxes. Designed to be easily cleaned, loaded, and mounted using our rotating lock knobs to secure to the iN/TRAXX track.



	IMPERIAL	METRIC
Part Number	0480101	
Dimensions	W 10.7 in D 4.5 in L 24.5 in	W 272 mm D 116 mm L 623 mm
Weight	26.3 lb	11.5 kg
Load Capacity	8.8 lb	4 kg
Crash Tested	10g, 22g, 26g	

- Glovebox is designed for horizontal track mounting only
- 0480101 must have 4 glove boxes installed at all times
- Please refer to separate operators manual

ACC - Mount | HP Printer Mount

The HP Printer Mount accepts a HP Office Jet 202 style printer but could be adapted for other styles of printers. Designed to be easily cleaned, loaded, and mounted using our SafeMount system. This is a wall mount into iN/TRAXX track.



	IMPERIAL	METRIC
Part Number	0480227	
Dimensions	W 14.5 in D 12 in L 9.8 in	W 368 mm D 304 mm L 250 mm
Weight	5.4 lb	2.4 kg
Load Capacity	6.6 lb	3 kg

- Supplied complete with bolts and spacers to suit each
- iN/TRAXX wall mount only
- Refer to separate customer drawings for mounting details.
- Please refer to separate operators manual.
- Not crash tested.

KEY

(W) Width is measured as 'Y' axis in relation to mounting to the track
 (D) Depth is measured as 'Z' axis in relation to mounting to the track
 (L) Length is measured as 'X' axis in relation to mounting to the track

Accessory Mounts

Adapter Block | Direct Mount

The New iNTRAXX Adaptor block is used when direct to wall or direct to bench mounting is required without using a safemount and intraxx track system



	IMPERIAL	METRIC
Part Number	0480194	
Dimensions	W 3.3 in D 0.5 in L 3.3 in	W 85 mm D 12 mm L 85 mm
Weight	0.88 lb	0.40 kg
Crash Tested	10g, 22g, 26g	

- Ferno is not responsible of testing claims of OEM mounts
- Compliance is in conjunction with other device mounts.

Lock Knob | Multi Mount

The Lock Knob Multi Mount supplies options for mounting a range of light weight products. A series of pre-drilled holes allows for equipment such as PouchMount plate, sphygmometer and sharps containers just to name a few.



	IMPERIAL	METRIC
Part Number	0480210	
Dimensions	W 6.3 in D 4.3 in L 11.8 in	W 160 mm D 110 mm L 300 mm
Weight	1.3 lb	0.61 kg
Load Capacity	4.4 lb	2 kg
Crash Tested	10g, 22g, 26g	

- Products to be mounted are sold separately
- Ferno is not responsible of testing claims of OEM mounts
- iNTRAXX track sold separately

KEY

(W) Width is measured as 'Y' axis in relation to mounting to the track
 (D) Depth is measured as 'Z' axis in relation to mounting to the track
 (L) Length is measured as 'X' axis in relation to mounting to the track

Accessory Mounts

Lock Knob | Multipurpose

Lock Knobs are used on various pieces throughout the Ferno range and are used to secure products to INJTRAXX.



Lock Knob | Multipurpose
Round Foot

Lock Knobs are used on various pieces throughout the Ferno range and are used to secure products to INJTRAXX.



T Slot | Foot

The T Slot Foot with two M6 threaded holes, 16mm apart, provides an alternative mounting solution for various products to INJTRAXX.



KEY

(W) Width is measured as 'Y' axis in relation to mounting to the track
 (D) Depth is measured as 'Z' axis in relation to mounting to the track
 (L) Length is measured as 'X' axis in relation to mounting to the track

	IMPERIAL	METRIC
Part Number	0480071	
Dimensions	W 1.5 in D 21.1 in L 1.5 in	W 37.6 mm D 53 mm L 37.6 mm
Weight	0.5 lb	0.23 kg
Crash Tested	10g, 22g, 26g	

• Sold individually

	IMPERIAL	METRIC
Part Number	0480132	
Dimensions	W 1.5 in D 21.1 in L 1.5 in	W 37.6 mm D 53 mm L 37.6 mm
Weight	0.5 lb	0.23 kg
Crash Tested	10g, 22g, 26g	

• Sold individually

	IMPERIAL	METRIC
Part Number	0480089	
Dimensions	W 0.7 in D 0.3 in L 1.2 in	W 19 mm D 7 mm L 31 mm
Weight	0.02 lb	0.001 kg
Crash Tested	10g, 22g, 26g	

SafeSeat | Single Lapsash

Mounts into iN/TRAXX and allows the ability to move the seat around the vehicle as clinical procedures demand.



	IMPERIAL	METRIC
Part Number	0480115	
Dimensions	W 38.1 in D 22.2 in L 22 in	W 970 mm D 565 mm L 560 mm
Weight	52.9 lb	24 kg

- Refer to Installation Manual for installation instructions.
- Dimensions relate to seat in unfolded position with headrest fully extended
- Refer to FMVSS and UN Regulation for test specifications

SafeSeat | Dual Lapsash

Mounts into iN/TRAXX and allows the ability to move the seat around the vehicle as clinical procedures demand.



	IMPERIAL	METRIC
Part Number	0480166	
Dimensions	W 38.1 in D 22.2 in L 22 in	W 970 mm D 565 mm L 560 mm
Weight	55.1 lb	25 kg

- Refer to Installation Manual for installation instructions.
- Dimensions relate to seat in unfolded position with headrest fully extended
- Refer to FMVSS and UN Regulation for test specifications

KEY

(W) Width is measured as 'Y' axis in relation to mounting to the track
 (D) Depth is measured as 'Z' axis in relation to mounting to the track
 (L) Length is measured as 'X' axis in relation to mounting to the track

Spare Parts

SafeMount | Connector

Used in the SafeMount with Connector, it is the interface between the equipment and the SafeMount.



	IMPERIAL	METRIC
Part Number	0480012	
Dimensions	W 1.8 in D 0.6 in	W 45.7 mm D 45.7 mm
Weight	0.1 lb	0.045 kg
Load Capacity	22 lb	10 kg
Crash Tested	10g, 22g, 26g	

Spacer Plate | 0.5 in

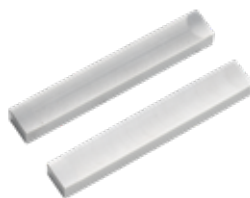
The Spacer Plate can be used on the 12 and 25kg Threaded SafeMounts and provides a surface 0.5" further away from the IN/TRAXX.



	IMPERIAL	METRIC
Part Number	0480057	
Dimensions	W 3.3 in D 0.05 in L 3.3 in	W 85 mm D 12.7 mm L 85 mm
Weight	0.3 lb	0.12 kg

Splice Key | Track Splicing

The Splicing Keys are used to join 2 end sections of IN/TRAXX.



	IMPERIAL	METRIC
Part Number	0480054	
Dimensions	W 0.3 in D 0.2 in L 2.4 in	W 8 mm D 6 mm L 60 mm
Weight	0.019 lb	8.6 g

- Pack of 2
- Included with each standard length of track

KEY

(W) Width is measured as 'Y' axis in relation to mounting to the track
 (D) Depth is measured as 'Z' axis in relation to mounting to the track
 (L) Length is measured as 'X' axis in relation to mounting to the track

Spare Parts

Set Screw | Track Splicing

Set Screws are used to secure the splice key in place when joining sections of track.



	IMPERIAL	METRIC
Part Number	0480055	
Dimensions	W 0.16 in	W 4 mm
	D 0.24 in	D 6 mm
	L 0.16 in	L 4 mm

- Pack of 4
- Included with each standard length of track

Adapter Plate | LifePak 15

The plate is a serviceable item fitted to the bottom of the LifePak 15 defib to locate the defib in the iNTRAXX mount and protect the bottom of your defibrillator.



	IMPERIAL	METRIC
Part Number	0480167	
Dimensions	W 0.6 in	W 16 mm
	D 6.9 in	D 174 mm
	L 3.7 in	L 94 mm
Weight	0.4 lb	0.2 kg

Container | Trash

This spare trash container is a serviceable item to replace as needed for part #0480044.



	IMPERIAL	METRIC
Part Number	0480075	
Dimensions	W 10 in	W 225 mm
	D 9.8 in	D 250 mm
	L 10.4 in	L 265 mm

- 0480044 comes with a container

KEY

(W) Width is measured as 'Y' axis in relation to mounting to the track
 (D) Depth is measured as 'Z' axis in relation to mounting to the track
 (L) Length is measured as 'X' axis in relation to mounting to the track

Spare Parts

Container | Trash

This spare trash container is a serviceable item to replace as needed for part #0480249.



	IMPERIAL	METRIC
Part Number	0480251	
Dimensions	W 12 in	W 300 mm
	D 4.4 in	D 110 mm
	L 11.6 in	L 290 mm

- 0480249 comes with a container
- 90-Day Warranty on trash bin

Container | Sharps

This spare sharps container is a serviceable item to replace as needed for part #0480045.



	IMPERIAL	METRIC
Part Number	0480076 <i>(While Supplies Last)</i>	
Dimensions	W 12.2 in	W 310 mm
	D 4.3 in	D 110 mm
	L 11.4 in	L 290 mm

- 0480045 comes with a container

Container | Sharps

This spare sharps container is a serviceable item to replace as needed for part #0480248.



	IMPERIAL	METRIC
Part Number	0480250	
Dimensions	W 12.4 in	W 310 mm
	D 4.4 in	D 110 mm
	L 11.6 in	L 290 mm

- 0480048 comes with a container
- 90-Day Warranty on sharps bin

KEY

(W) Width is measured as 'Y' axis in relation to mounting to the track
 (D) Depth is measured as 'Z' axis in relation to mounting to the track
 (L) Length is measured as 'X' axis in relation to mounting to the track

Service Kits

Service Kits | LP 15

The LP 15 defibrillator mount service kit replaces the items within your defibrillator mount bracket to keep it in the best possible operational condition.



Part Number 0480214

- 0480014 kit supplied complete. Parts not sold separately
- Please follow instructions for the replacement of these spare parts

Service Kits | Zoll

The Zoll defibrillator mount service kit replaces the items within your defibrillator mount bracket to keep it in the best possible operational condition.



Part Number 0480213

- 0480213 kit complete. Parts not sold separately
- Please follow instructions for the replacement of these spare parts

Service Kits | SafeMounts

The New iN/TRAXX SafeMount service kit replaces the items within your SafeMount required to Service your Safemounts to retain the best possible operational condition.



Part Number 0480240

- Compatible to use on iN/TRAXX safemounts 0480010, 0480011 & 0480146
- Please follow instructions for the replacement of these spare parts
- Refer to separate operators manual for instructions



Service Kits | SafePak Multi-Mount Wedge

The wedge is a service item for the SafePak Mounts.



Part Number 0480208

- Compatible with 0480193, 0480209, 0480207, and 0480201
- Refer to separate operators manual for instructions

Service Kits | Swivel Mount Handle

The new iN/TRAXX SafeMount swivel mount handle service kit replaces the items within your swivel mount required to retain the best possible operational condition. Short and long handle kits available.



Part Number	0480228	Short Handle
	0480229	Long Handle

- 0480228 Short Handle Kit is compatible with 0480164 and iN/TRAXX swivel mounts with short handles
- 0480229 Long Handle Kit is compatible with 0480165 and iN/TRAXX swivel mounts with long handles
- Please follow instructions for the replacement of these spare parts
- Refer to separate operators manual for instructions

KEY

- (W) Width is measured as 'Y' axis in relation to mounting to the track
- (D) Depth is measured as 'Z' axis in relation to mounting to the track
- (L) Length is measured as 'X' axis in relation to mounting to the track

Product Spec Index

ITEM NUMBER	PRODUCT	WIDTH	DEPTH	LENGTH	WEIGHT	MATERIAL	FINISH	CERTIFICATION STANDARD	LOAD CAPACITY/ SWL	SOLD IN USA
0480001	Track System 1016mm	7.4 in 189 mm	.5 in 12.7 mm	40 in 1016 mm	7.5 lb 3.4 kg	Aluminum	Clear Natural Anodized	10G 22G 26G	220.4 lb 100 kg	Yes
0480002 0480003 0480004	Black End Caps Regular Grey End Caps Regular White End Caps Regular	7.6 in 90 mm	1.9 in 48 mm	.7 in 17 mm	.605 lb 90 g	Zytel	Black, Grey, or White	10G 22G 26G	—	Yes
0480005 0480006 0480007	Black T-Splice Caps Grey T-Splice Caps White T-Splice Caps	7.4 in 193 mm	.9 in 24 mm	.6 in 16 mm	.14 lb 64 g	Zytel	Black, Grey, or White	10G 22G 26G	—	Yes
0480008	Track Clip	2.7 in 69 mm	1.6 in 40.5 mm	1.6 in 41.5 mm	.2 lb .08 kg	Aluminum 7075-T6, Stainless Steel, Plastic	Clear Natural Anodized, Powder Coated Red & White	10G 22G 26G	5 lb 2.27 kg	Yes
0480010	SafeMount Threaded (25kg)	5.9 in 151 mm	1.4 in 34.5 mm	6.6 in 167 mm	1.86 lb .845 kg	Aluminum 7075-T6, Stainless Steel, Plastic	Clear Natural Anodized, Powder Coated White	10G 22G 26G	25 kg	Yes
0480011	SafeMount With Connector	7.4 in 187 mm	1.9 in 48.5 mm	6.6 in 167 mm	1.65 lb .75 kg	Aluminum 7075-T6, Stainless Steel, Plastic	Clear Natural Anodized, Powder Coated White	10G 22G 26G	22 lb 10 kg	Yes
0480012	SafeMount Connector	1.8 in 45.7 mm	.6 in 14.9 mm	—	.1 lb .045 kg	Aluminum 7075-T6	Clear Natural Anodized	10G 22G 26G	22 lb 10 kg	Yes
0480013	Defibrillator Wall Mount LifePak 15	14 in 356 mm	12.6 in 321 mm	8.3 in 210 mm	14.8 lb 6.7 kg	Aluminum 7075-T6, Stainless Steel, Plastic	Powder Coated White	10G 22G 26G	—	Yes
0480014	Defibrillator Swivel Mount LifePak 15	16.3 in 415 mm	12 in 304 mm	8.3 in 210 mm	16.3 lb 7.4 kg	Aluminum 7075-T6, Stainless Steel, Plastic	Powder Coated White	10G 22G 26G	—	Yes
0480015	Defibrillator Wall+Swivel Mount LifePak 15	16.3 in 415 mm	13.5 in 344 mm	8.3 in 210 mm	18.3 lb 8.3 kg	Aluminum 7075-T6, Stainless Steel, Plastic	Powder Coated White	10G 22G 26G	—	Yes
0480019	Defibrillator Wall Mount Zoll X Series	11.1 in 282 mm	11.2 in 285 mm	8.3 in 210 mm	12.3 lb 5.6 kg	Plastic, Aluminum	Powder Coated White	10G 22G 26G	—	Yes
0480020	Defibrillator Swivel Mount Zoll X Series	13.5 in 342 mm	10.4 in 265 mm	8.3 in 210 mm	17.4 lb 7.9 kg	Plastic, Aluminum	Powder Coated White	10G 22G 26G	—	Yes
0480021	Defibrillator Wall+Swivel Mount Zoll X Series	13.5 in 342 mm	12 in 305 mm	8.3 in 210 mm	19.4 lb 8.8 kg	Plastic, Aluminum	Powder Coated White	10G 22G 26G	—	Yes
0480022	SafePak Mount	43.9 in 1114 mm	2 in 50 mm	19 in 485 mm	12.79 lb 5.8 kg	Plastic, Aluminum	Powder Coated White	10G 22G 26G	25 lb 11.38 kg	Yes
0480023	Red SafePak Small	12.8 in 325 mm	9.4 in 240 mm	18.1 in 460 mm	11.1 lb 5.03 kg	Plastic	Red	10G 22G 26G	17 lb 7.71 kg	Yes
0480024	Red SafePak Regular	18.9 in 481 mm	9.4 in 240 mm	18.1 in 460 mm	16.9 lb 7.66 kg	Plastic	Red	10G 22G 26G	25 lb 11.34 kg	Yes
0480026	SafePak Pouch Small	4.7 in 120 mm	2.8 in 70 mm	3.9 in 100 mm	.3 lb .136 kg	Plastic	Glossy Grey Shell, Matte Grey Plastics	10G 22G 26G	.5 lb .226 kg	Yes
0480027	SafePak Pouch Medium	4.7 in 120 mm	2.8 in 70 mm	7.9 in 200 mm	0.6 lb 0.25 kg	Plastic	Glossy Grey Shell, Matte Grey Plastics	10G 22G 26G	2.5 lb 1.13 kg	Yes
0480028	SafePak Pouch Large Vertical	10.2 in 260 mm	2.8 in 70 mm	7.9 in 200 mm	0.9 lb 0.4 kg	Plastic	Glossy Grey Shell, Matte Grey Plastics	10G 22G 26G	4.5 lb 2.04 kg	Yes
0480029	SafePak Pouch Large Horizontal	4.7 in 120 mm	2.8 in 70 mm	15.7 in 400 mm	0.9 lb 0.4 kg	Plastic	Glossy Grey Shell, Matte Grey Plastics	10G 22G 26G	4.5 lb 2.04 kg	Yes
0480030	Pouch Mount Carrier Single	4.6 in 118 mm	0.6 in 15 mm	7.5 in 190 mm	0.23 lb 0.106 kg	Plastic	Grey, Red	10G 22G 26G	5 lb 2.4 kg	Yes
0480031	Pouch Track Mount Single	4.9 in 125 mm	2.1 in 53.9 mm	11.4 in 290 mm	1.59 lb .725 kg	Aluminum, Plastic	Powder Coated White, Grey Plastics	10G 22G 26G	5 lb 2.4 kg	Yes
0480032	Pouch Track Mount Double Vertical	10.6 in 268 mm	2.1 in 53.9 mm	11.4 in 290 mm	.557 lb 1.23 kg	Aluminum, Plastic	Powder Coated White, Grey Plastics	10G 22G 26G	5 lb 2.4 kg	Yes
0480034	Oxygen Mount Single	18.9 in 480 mm	8.3 in 210 mm	6.6 in 167 mm	4.9 lb 2.2 kg	Plastic, Aluminum	Powder Coated White	10G 22G 26G	25 kg	Yes
0480036	Litter Arm Multipurpose	7.2 in 182 mm	28.7 in 730 mm	6.6 in 167 mm	13.2 lb 6 kg	Aluminum	Powder Coated White	—	352.7 lb 160 kg per pair	Yes
0480037	Litter Arm Litter Arm Mount Talon 90C	5 in 150 mm	28.7 in 730 mm	5 in 150 mm	13.2 lb 6 kg	Steel	Powder Coated Black	10G	—	Yes
0480038	Vent Mount Impact 731	7.8 in 199 mm	2.5 in 64 mm	6.6 in 167 mm	2 lb 0.9 kg	Plastic, Aluminum	Powder Coated White	10G 22G 26G	—	Yes
0480039	Work Tray With Arm	7.8 in 199 mm	12.7 in 323 mm	12.7 in 323 mm	3 lb 1.37 kg	Aluminum, Plastic	White	10G 22G 26G	—	Yes
0480042	LSU Mount Laerdal	6.8 in 173 mm	2.2 in 57 mm	7.5 in 190 mm	2.6 lb 1.2 kg	Aluminum	Powder Coated White	10G 22G 26G	27.6 lb 12.5 kg	Yes
0480043	Suction Mount SSCOR	5.9 in 151 mm	2.4 in 60 mm	7.9 in 200 mm	2.6 lb 1.2 kg	Aluminum	Powder Coated White	10G 22G 26G	—	Yes
0480044	Trash Bin Mount	10.3 in 262 mm	9.2 in 234 mm	10.6 in 268 mm	4.4 lb 2 kg	Plastic, Aluminum	Powder Coated White	10G 22G 26G	2.2 lb 1 kg	Yes
0480045	Sharps Bin Mount	13.8 in 350 mm	6.8 in 173 mm	13 in 330 mm	4.9 lb 2.2 kg	Plastic, Aluminum	Powder Coated White	10G 22G 26G	2.2 lb 1 kg	Yes

Product Spec Index

ITEM NUMBER	PRODUCT	WIDTH	DEPTH	LENGTH	WEIGHT	MATERIAL	FINISH	CERTIFICATION STANDARD	LOAD CAPACITY/ SWL	SOLD IN USA
0480047	Ram Adapter 2.5 SMC	2.5 in 64 mm	0.3 in 7 mm	2.5 in 64 mm	0.1 lb 0.06 kg	Aluminum	Black	10G 22G 26G	—	Yes
0480048	Suction Mount Laerdal LCSU4	10 in 255 mm	10 in 254 mm	6.92 in 176 mm	8.02 lb 3.64 kg	Aluminum	Powder Coated White	10G 22G 26G	55.11 lb 25 kg	Yes
0480049 0480050 0480051	Black End Caps Thin Grey End Caps Thin White End Caps Thin	7.4 in 193 mm	1.5 in 48 mm	.7 in 17 mm	.605 lb 275 g	Zytel	Black, Grey, or White	10G 22G 26G	—	Yes
0480054	Splicing Key	—	—	2.4 in 60 mm	.019 lb 8.6 g	Aluminum	None	10G 22G 26G	—	Yes
0480056	Wall Mount Corpuls 3	7.7 in 196 mm	3.9 in 98 mm	10.3 in 261 mm	3.5 lb 1.59 kg	Aluminum	Powder Coated White	10G 22G 26G	—	Yes
0480057	Spacer Plate 0.5 in	3.3 in 85 mm	0.5 in 12.7 mm	3.3 in 85 mm	0.3 lb 0.12 kg	Plastic	White	—	—	Yes
0480059 0480060	Blue SafePak Regular White SafePak Regular	18.9 in 481 mm	9.4 in 240 mm	18.1 in 460 mm	16.9 lb 7.66 kg	Plastic	Red, Blue, or White	10G 22G 26G	25 lb 11.34 kg	Yes
0480062	Track System 340 mm, Black End Caps	7.6 in 193 mm	0.7 in 17 mm	13.4 in 340 mm	2.6 lb 1.2 kg	Aluminum & Plastic	Clear Natural Anodized	10G 22G 26G	55.1 lb 25 kg	Yes
0480071	Lock Knob Multipurpose	1.5 in 37.6 mm	2.1 in 53 mm	1.5 in 37.6 mm	0.5 lb 0.23 kg	Stainless Steel & Plastic	White	10G 22G 26G	—	Yes
0480072	SafePak Pouch Divider	3.9 in 99 mm	2.55 in 64.8 mm	1.57 in 40 mm	—	Plastic	Grey	—	—	Yes
0480073	Track System 1016 mm, No Holes (Bonding)	7.4 in 189 mm	0.5 in 12.7 mm	40 in 1016 mm	7.5 lb 3.4 kg	Aluminum	Clear Natural Anodized	10G 22G 26G	220.4 lb 100 kg	Yes
0480074	Mounting Plate PneuPac	7.8 in 199 mm	2.4 in 60 mm	6.6 in 167 mm	2.4 lb 1.08 kg	Aluminum	Powder Coated White	10G 22G 26G	—	Yes
0480075	Container Trash	10.3 in 255 mm	9.8 in 250 mm	10.4 in 265 mm	—	Plastic	Grey	—	—	Yes
0480076	Container Sharps	12.2 in 310 mm	11.4 in 290 mm	4.3 in 110 mm	—	Plastic	Red Clear	—	—	Yes
0480077	Blue SafePak Small	12.8 in 325 mm	9.4 in 240 mm	18.1 in 460 mm	11.1 lb 5.03 kg	Plastic	Blue	10G 22G 26G	17 lb 7.71 kg	Yes
0480080	Pole Mount Single	8.1 in 206 mm	5.5 in 140 mm	6.6 in 167 mm	3.6 lb 1.62 kg	Aluminum	Clear Natural Anodized	10G 22G 26G	—	Yes
0480081	Pole Mount Double	12.6 in 320 mm	4.1 in 103 mm	6.6 in 167 mm	3.7 lb 1.7 kg	Aluminum	Clear Natural Anodized	10G 22G 26G	—	Yes
0480082	Medrail Mount 25mm	5.9 in 151 mm	3.2 in 81 mm	12 in 305 mm	2.7 lb 1.23 kg	Aluminum	Clear Natural Anodized	10G 22G 26G	—	Yes
0480083	Pouch Track Mount Double	4.9 in 125 mm	2.1 in 53.9 mm	21.5 in 545 mm	2.2 lb 1.14 kg	Aluminum, Plastic	Powder Coated White, Grey Plastics	10G 22G 26G	5 lb 2.4 kg	Yes
0480084	Wall Mount Physio LP1000 AED	7.7 in 196 mm	2.4 in 62 mm	10 in 253 mm	3.1 lb 1.4 kg	Aluminum	Powder Coated White	10G 22G 26G	—	Yes
0480085	SafeCab Small	13.8 in 350 mm	13 in 330 mm	21.5 in 545 mm	29.8 lb 13.5 kg	CPVC	White with Red Trim	10G 22G 26G	11 lb 5 kg	Yes
0480086	SafeCab Medium	13.8 in 350 mm	13 in 330 mm	31.5 in 800 mm	36.4 lb 16.5 kg	CPVC	White with Red Trim	10G 22G 26G	17.6 lb 8 kg	Yes
0480087	SafeCab Large	13.8 in 350 mm	13 in 330 mm	46.5 in 1180 mm	51.8 lb 23.5 kg	CPVC	White with Red Trim	10G 22G 26G	26.5 lb 12 kg	Yes
0480089	T Slot Foot	0.7 in 19 mm	0.3 in 7 mm	1.2 in 31 mm	0.02 lb 0.01 kg	Aluminum	Clear Natural Anodized	10G 22G 26G	—	Yes
0480090	White SafePak Small	12.8 in 325 mm	9.4 in 240 mm	18.1 in 460 mm	11.1 lb 5.03 kg	Plastic	White	10G 22G 26G	17 lb 7.71 kg	Yes
0480091	Medrail Mount 30mm	5.9 in 151 mm	3.2 in 81 mm	12 in 305 mm	3.2 lb 1.44 kg	Aluminum	Clear Natural Anodized	10G 22G 26G	—	Yes
0480092	SafePak Pouch Medium Mesh	4.7 in 120 mm	Expandable to 4 in 101.6 mm	7.9 in 200 mm	1.5 lb .7 kg	Flexible Mesh	Mesh Fabric, Matte Grey Plastics	10G 22G 26G	2.5 lb 1.13 kg	Yes
0480093	Wall Mount Corpuls Monitor	7.8 in 199 mm	3.9 in 98 mm	6.6 in 167 mm	2.9 lb 1.3 kg	Aluminum	Powder Coated White	10G	—	Yes
0480094	Swivel Mount Corpuls 3	10.3 in 261 mm	9.8 in 250 mm	10.3 in 262 mm	4.9 lb 2.24 kg	Aluminum	Powder Coated White	10G 22G 26G	—	Yes
0480095	Wall + Swivel Mount Corpuls 3	10.3 in 261 mm	10.5 in 266 mm	10.3 in 262 mm	7.6 lb 3.44 kg	Aluminum	Powder Coated White	10G 22G 26G	—	Yes
0480099	ACC - Mount - Glovebox Single	10.1 in 259 mm	4.4 in 114 mm	9.7 in 247 mm	2.2 lb 1 kg	Aluminum	Powder Coated White	10G 22G 26G	2.2 lb 1 kg	—
0480100	ACC - Mount - Glovebox Triple	15.5 in 394 mm	4.8 in 114 mm	14.4 in 367 mm	3.4 lb 1.5 kg	Aluminum	Powder Coated White	10G 22G 26G	6.6 lb 3 kg	Yes
0480101	ACC - Mount - Glovebox Quad	10.7 in 272 mm	4.5 in 116 mm	24.5 in 623 mm	4.6 lb 2.1 kg	Aluminum	Powder Coated White	10G 22G 26G	8.1 lb 4 kg	Yes
0480106	ACC - Mount Trash Hamper - Ophart	9.44 in 240 mm	11.8 in 300 mm	6.1 in 155 mm	2.2 lb 1 kg	Aluminum	Powder Coated White	10G 22G 26G	6.6 lb 3 kg	Yes
0480107	Ceiling Track Right	7.4 in 189 mm	.5 in 12.7 mm	40 in 1016 mm	7.5 lb 3.4 kg	Aluminum	Clear Natural Anodized	10G 22G 26G	220.4 lb 100 kg	Yes
0480108	Ceiling Track Center	7.4 in 189 mm	.5 in 12.7 mm	40 in 1016 mm	7.5 lb 3.4 kg	Aluminum	Clear Natural Anodized	10G 22G 26G	220.4 lb 100 kg	Yes
0480109	Wall Vent Mount Draeger	11.2 in 285 mm	10.2 in 259 mm	9.5 in 242 mm	6.9 lb 3.14 kg	Aluminum	Powder Coated White	10G 22G 26G	—	Yes
0480110	Swivel Vent Mount Draeger	13.8 in 351 mm	9.9 in 251 mm	9.6 in 243 mm	8.7 lb 3.93 kg	Aluminum	Powder Coated White	10G 22G 26G	—	Yes
0480112	Pole Mount Vertical	5.9 in 151 mm	10 in 255 mm	6.6 in 167 mm	2.8 lb 1.29 kg	Aluminum	Clear Natural Anodized	10G 22G 26G	—	Yes
0480115	SafeSeat Single Lapsash	38.1 in 970 mm	22.2 in 565 mm	22 in 560 mm	52.9 lb 24 kg	Aluminum	Black	10G 22G 26G	—	Yes
0480123	Work Tray Hinged 2.0	4.6 in 117 mm	14.3 in 362 mm	12.7 in 323 mm	2.4 lb 1.11 kg	Aluminum, Plastic	White	10G 22G 26G	—	Yes

Product Spec Index

ITEM NUMBER	PRODUCT	WIDTH	DEPTH	LENGTH	WEIGHT	MATERIAL	FINISH	CERTIFICATION STANDARD	LOAD CAPACITY/ SWL	SOLD IN USA
0480124	HERSILL Mount V7 Plus B Emergency	5.9 in 151 mm	1.9 in 48 mm	6.6 in 167 mm	2.3 lb 1.05 kg	Aluminum	Powder Coated White	10G 22G 26G	—	Yes
0480127	Oxygen Mount CD 02 Mount Bracket Only	19.7 in 500 mm	5.6 in 142 mm	0.39 in 10 mm	2.2 lb 1 kg	Aluminum	Powder Coated White	10G 22G 26G	77.2 lb 25 kg	Yes
0480128	Oxygen Mount CD 02 Cylinder Bracket Only	19.7 in 500 mm	5.6 in 142 mm	0.39 in 10 mm	2.2 lb 1 kg	Aluminum, Rubber	Powder Coated White	10G 22G 26G	77.2 lb 25 kg	Yes
0480132	Lock Knob Multipurpose Round Foot	1.5 in 37.6 mm	2.1 in 53 mm	1.5 in 37.6 mm	0.5 lb 0.23 kg	Stainless Steel & Plastic	White	10G 22G 26G	—	Yes
0480139	Vent Mount Hamilton T1 Wall Mount Bracket	9.5 in 242 mm	4 in 100 mm	8.3 in 210 mm	1.1 lb 0.5 kg	Aluminum	Powder Coated White	10G 22G 26G	17.6 lb 8 kg	Yes
0480141	Sharps Bin Mount Sharpsafe	2.5 in 65 mm	7 in 178 mm	11.6 in 295 mm	1.6 lb .75 kg	Aluminum	Powder Coated White	10G 22G 26G	—	Yes
0480145	Oxygen Mount Double	34.5 in 876 mm	8.9 in 226 mm	17.8 in 451 mm	34 lb 15.4 kg	Plastic, Aluminum	Powder Coated White	10G 22G 26G	—	Yes
0480146	SafeMount Threaded (12kg)	5.9 in 151 mm	1.6 in 40 mm	6.6 in 167 mm	1.6 lb .74 kg	Aluminum 7075-T6, Stainless Steel, Plastic	Clear Natural Anodized, Powder Coated White	10G 22G 26G	26.5 lb 12 kg	Yes
0480149	Defibrillator Mount Zoll AED 3 in TRAXX	12.2 in 312 mm	9 in 229 mm	10.2 in 260 mm	5.7 lb 2.6 kg	Aluminum	Powder Coated White	10G 22G 26G	7.7 lb 3.5 kg	Yes
0480150	Defibrillator Mount Zoll AED 3 Direct Mount	12.2 in 312 mm	7.5 in 191 mm	10.2 in 260 mm	4.1 lb 1.9 kg	Aluminum	Powder Coated White	10G 22G 26G	7.7 lb 3.5 kg	Yes
0480151	Wall Mount D360	5.9 in 151 mm	15.1 in 384 mm	6.6 in 167 mm	4 lb 1.8 kg	Aluminum	Powder Coated White	10G 22G 26G	—	Yes
0480153	Litter Arm Loading Wedge	1.8 in 45 mm	7.7 in 195 mm	2 in 52 mm	.8 lb .37 kg	Plastic	Black	—	—	Yes
0480155	Pouch Mount Plate 3T2	17.8 in 453 mm	1.1 in 28.5 mm	16.4 in 416 mm	4.2 lb 1.9 kg	Aluminum, Plastic	Powder Coated White	10G 22G 26G	15 lb 6.8 kg	Yes
0480156	D360 ProPac/Zoll Adapter P/N FA868A151	1.6 in 41 mm	4.5 in 114 mm	7.1 in 180 mm	3.7 lb 1.7 kg	Aluminum	Powder Coated White	10G 20G 26G	—	Yes
0480159	Ventilator Mount Weimann Lifebase 3NG	11 in 280 mm	15.9 in 404 mm	2.2 in 56 mm	4.8 lb 2.2 kg	Aluminum	Powder Coated White	10G 20G 26G	—	Yes
0480160	Pouch Mount Plate 4T2	23.1 in 588 mm	1.1 in 28.5 mm	16.4 in 416 mm	4.42 lb 2.46 kg	Aluminum, Plastic	Powder Coated White	10G 22G 26G	19.9 lb 9.04 kg	Yes
0480161	Pouch Mount Plate 2T2	11.7 in 298 mm	1.1 in 28.5 mm	16.4 in 416 mm	2.8 lb 1.25 kg	Aluminum, Plastic	Powder Coated White	10G 22G 26G	10 lb 4.52 kg	Yes
0480162	Pouch Mount Plate 1T2	7.2 in 183 mm	1.1 in 28.5 mm	16.4 in 416 mm	1.6 lb .72 kg	Aluminum, Plastic	Powder Coated White	10G 22G 26G	5.0 lb 2.26 kg	Yes
0480163	Oxygen Mount CD 02 single Cylinder Mount	19.7 in 500 mm	5.1 in 130 mm	6.7 in 167 mm	6.1 lb 2.7 kg	Aluminum, Rubber	Powder Coated White	10G 22G 26G	77.2 lb 25 kg	Yes
0480164	Swivel SafeMount 360deg "long handle"	2.5 in 66 mm	11.4 in 291 mm	6.5 in 167 mm	19 lb 8.1 kg	Aluminum	Powder Coated White & Black	10G 22G 26G	55.1 lb 25 kg	Yes
0480165	Swivel SafeMount 360deg "short handle"	2.5 in 66 mm	9.8 in 250 mm	6.5 in 167 mm	17.9 lb 8.1 kg	Aluminum	Powder Coated White & Black	10G 22G 26G	55.1 lb 25 kg	Yes
0480166	SafeSeat Dual Lapsash	38.1 in 970 mm	22.2 in 565 mm	22 in 500 mm	55.1 lb 2 kg	Aluminum	Black	—	—	Yes
0480167	Adapter Plate LifePak 15	.62 in 16 mm	6.85 in 174 mm	3.7 in 94 mm	.4 lb .2 kg	Plastic	Black	—	—	Yes
0480168	Spacer Litter Arm Spacer	1.4 in 36 mm	1.7 in 45 mm	1.9 in 50 mm	.11 lb .05 kg	Plastic	Black	10G 22G 26G	—	Yes
0480169	Suction Mount SAM e.p.s. (MGE)	9.7 in 247 mm	.3 in 10 kg	5.1 in 130 kg	6 lb 2.7 kg	Stainless Steel	Natural	10G 20G 26G	—	Yes
0480170	Swivel Mount Rear Holder	3.3 in 85 mm	.9 in 25 mm	1.3 in 35 mm	.22 lb .1 kg	Aluminum	Powder Coated White	10G 20G 26G	—	Yes
0480171	Track System 1016 Centre Drop-in	7.41 in 189 mm	0.5 in 12.7 mm	40 in 1016 mm	7.5 lb 3.4 kg	Aluminum	Anodized	10G 22G 26G	220.4 lb 100 kg	Yes
0480172	SafeMount HD Threaded (40 kg)	6 in 151 mm	1.4 in 34.5 mm	6.7 in 167 mm	1.9 lb 0.85 kg	Aluminum, Plastic	Powder Coated White	10G 22G 26G	88 lb 40 kg	Yes
0480173	SafePouch Small Jumbo	4.7 in 120 mm	4.7 in 120 mm	3.9 in 100 mm	.3 lb .1 kg	Matte Grey Plastic	Gloss Grey Shell	10G 20G 26G	0.5 lb .2 kg	Yes
0480174	SafePouch Medium Jumbo	4.7 in 120 mm	4.7 in 120 mm	7.9 in 200 mm	.6 lb .25 kg	Matte Grey Plastic	Gloss Grey Shell	10G 20G 26G	2.5 lb 1.3 kg	Yes
0480175	SafePouch Large Vertical Jumbo	10.2 in 260 mm	4.7 in 120 mm	7.9 in 200 mm	1 lb .4 kg	Matte Grey Plastic	Gloss Grey Shell	10G 20G 26G	4.5 lb 2 kg	Yes
0480176	SafePouch Large HOZ Jumbo	4.7 in 120 mm	4.7 in 120 mm	15.7 in 400 mm	1 lb .4 kg	Matte Grey Plastic	Gloss Grey Shell	10G 20G 26G	4.5 lb 2 kg	Yes
0480177	SafePouch Dual Large Vertical Jumbo	10.2 in 260 mm	4.7 in 120 mm	15.7 in 400 mm	1.8 lb .8 kg	Matte Grey Plastic	Gloss Grey Shell	10G 20G 26G	8.8 lb 4 kg	Yes
0480179	Litter Arm Light	.7 in 18 mm	.4 in 10 mm	19.9 in 505 mm	.19 lb .09 kg	Aluminum & Plastic	Brushed	—	—	Yes
0480180	Defibrillator Wall Mount Tempus LS Kit	6.4 in 165 mm	6.4 in 165 mm	7.6 in 195 mm	1.6 lb .7 kg	Stainless Steel	Brushed	10G 20G 26G	—	Yes
0480181	Defibrillator Wall Mount Tempus PRO Kit	5.9 in 151 mm	6.7 in 171 mm	12.2 in 310 mm	1.3 lb 6.1 kg	Stainless Steel	Brushed	10G 20G 26G	—	Yes

Product Spec Index

ITEM NUMBER	PRODUCT	WIDTH	DEPTH	LENGTH	WEIGHT	MATERIAL	FINISH	CERTIFICATION STANDARD	LOAD CAPACITY/ SWL	SOLD IN USA
0480182	Defibrillator Mount Tempus Pro 360 Swivel Mount Complete	8.07 in 205 mm	11.41 in 290 mm	6.49 165 mm	5.3 lb 2.4 kg	Aluminum	Powder Coated White	10G 22G 26G	19.84 lb 9 kg	Yes
0480183	Defibrillator Mount Tempus LS Stacked Adapter Only	15.55 in 395 mm	5.51 140 mm	4 in 100 mm	1.32 lb 0.6 kg	Aluminum	Powder Coated White	10G 22G 26G	6.61 lb 3 kg	Yes
0480184	Defibrillator Counter Top D360 Swivel	7.6 in 195 mm	1.4 in 37 mm	7.2 in 185 mm	1.9 lb .8 mm	Aluminum	Anodized	10G 20G	—	Yes
0480185	Defibrillator Counter Top D360 Zoll Mount Kit	7.6 in 195 mm	2.3 lb 60 mm	7.2 lb 185 mm	2.8 lb 1.3 kg	Aluminum	Anodized	10G 20G	—	Yes
0480186	Vent Mount D360 Hamilton Mount Kit	8.2 in 209.5 mm	12.8 in 327 mm	7.7 mm 197 mm	3.5 lb 1.5 kg	Aluminum	Anodized	10G 20G	—	Yes
0480187	Vent Mount D360 Hamilton Adapter	8.2 in 209.5 mm	105. in 266.7 mm	7.7 in 197 mm	1.4 lb .6 kg	Aluminum	Anodized	10G 20G	—	Yes
0480190	SafeMount Tablet General B101UC	5.9 in 151 mm	9.3 in 235 mm	6.6 in 167 mm	2.3 lb 1.06 kg	Plastic	Black	10G 22G 26G	4 lb 1.9 kg	Yes
0480191	Pouch Mount Track Adapter - Pouch Mount Plate	7.2 in 183 mm	2.1 in 54 mm	22.2 in 564 mm	2.7 in 1.2 mm	Aluminum	Powder Coated White	10G 22G 26G	35 lb 16 kg	Yes
0480193	SafePak Multi-Mount - 3-Row (SafeMount included)	16.7 in 425 mm	1.7 in 45 mm	23.6 in 600 mm	7.3 lb 3.3 kg	Aluminum, Plastic	Powder Coated White	10G 22G 26G	26.5 lb 12 kg	Yes
0480194	ACC Mount Direct Mount Adapter Block	3.34 in 85 mm	0.47 in 12 mm	3.34 in 85 mm	0.88 lb 0.40 kg	Aluminum	Powder Coated White	10G 22G 26G	—	Yes
0480195	Sharps Bin Mount 1.4LT Sharps Mount	6.29 in 160 mm	4.33 in 110 mm	11.81 in 300 mm	2.42 lb 1.1 kg	Aluminum	Powder Coated White	10G 22G 26G	4.4 lb 2 kg	Yes
0480197	Defibrillator Mount Zoll INTRAXX Wall Mount (Charging)	8.2 in 210 mm	11.8 in 300 mm	6.2 in 160 mm	8.1 lb 3.7 kg	Aluminum	Powder Coated White	10G 22G 26G	26.4 lb 12 kg	Yes
0480198	ACC - Mount SafeMount to Aviation D360 Adapter Plate	5.9 in 151 mm	.31 in 8 mm	7.5 in 193 mm	.4 lb .19 kg	Aluminum	Standard	—	—	Yes
0480199	Suction Unit Mount Combo Adapter Mount	6.1 in 155 mm	2.3 in 60 mm	6.4 in 165 mm	2.6 lb 1.1 kg	Aluminum	Powder Coated White	10G 22G 26G	—	Yes
0480201	SafePak Multi-Mount - 2-Row (SafeMount Included)	16 in 401 mm	1.8 in 44 mm	17 in 425 mm	5.3 lb 2.4 kg	Aluminum, Plastic	Powder Coated White	10G 22G 26G	26.4 lb 12 kg	Yes
0480204	SafePak Ledge & Strap Kit	4.2 in 104 mm	4.2 in 104 mm	10 in 250 mm	0.88 lb 0.4 kg	Aluminum	Powder Coated White	10G 22G 26G	17.6 lb 8 kg	Yes
0480207	SafePak Multi-Mount - 2-Row Base Plate	16 in 401 mm	1.8 in 44 mm	17 in 425 mm	3.5 lb 1.6 kg	Aluminum, Plastic	Powder Coated White	10G 22G 26G	26.4 lb 12 kg	Yes
0480208	Service Kit SafePak Multi-Mount Wedge	—	—	—	—	Plastic	—	—	—	Yes
0480209	SafePak Multi-Mount - 3-Row Base Plate	16.7 in 425 mm	1.1 in 30 mm	23.6 in 600 mm	5 lb 2.3 kg	Aluminum, Plastic	Powder Coated White	10G 22G 26G	26.5 lb 12 kg	Yes
0480210	Lock Knob Multi Mount	6.29 in 160 mm	4.33 in 110 mm	11.81 in 300 mm	13.4 lb 0.61 kg	Aluminum	Powder Coated White	10G 22G 26G	4.4 lb 2 kg	Yes
0480213	Service Kit Zoll	—	—	—	—	—	—	—	—	Yes
0480214	Service Kit LP 15	—	—	—	—	—	—	—	—	Yes
0480215	Litter Arm Board Lock	1.7 in 42 mm	1.6 in 40 mm	6.3 in 160 mm	0.44 lb 0.2 kg	Aluminum	Powder Coated White	10G	—	Yes
0480217	Defibrillator Mount Zoll X Direct Wall Mount (Charging)	8.2 in 210 mm	11.8 in 300 mm	6.2 in 100 mm	3.9 lb 2.8 kg	Aluminum	Powder Coated White	10G 22G 26G	26.4 lb 12 kg	Yes
0480218	Defibrillator Mount Tempus Mounting Kit Only	6.3 in 160 mm	5.12 in 130 mm	4 in 100 mm	1.43 lb 0.65 kg	Aluminum	Powder Coated White	10G 22G 26G	19.84 lb 9 kg	Yes
0480220	Litter Arm Ratchet Style Multipurpose	6.6 in 167 mm	27 in 685 mm	7.2 in 182 mm	13.2 lb 6 kg	Aluminum	Powder Coated White	10G	353 lb 160 kg	Yes
0480223	Suction Unit Mount Askir	10.4 in 265 mm	7.9 in 200 mm	4.1 in 105 mm	1.6 lb 0.73 kg	Aluminum	Powder Coated White	10G 22G 26G	8.8 lb 4 kg	Yes
0480224	Defibrillator Wall Mount G2 Schiller Defiguard Touch 7	7.55 in 192 mm	2.2 in 56 mm	8.03 in 204 mm	16.9 lb 7.7 kg	Aluminum	Powder Coated White	10G 22G 26G	55.11 lb 25 kg	Yes
0480227	ACC - Mount HP Printer Mount	14.5 in 368 mm	12 in 304 mm	9.8 in 250 mm	5.4 lb 2.43 kg	Aluminum	Powder Coated White	—	6.6 lb 3 kg	Yes
0480228	Service Kits Swivel Mount Short Handle	—	—	—	—	—	—	—	—	Yes
0480229	Service Kits Swivel Mount Long Handle	—	—	—	—	—	—	—	—	Yes
0480233	Suction Unit Mount Askir INTRAXX Mount	10.4 in 265 mm	9.1 in 230 mm	6.1 in 155 mm	3.3 lb 1.5 kg	Aluminum	Powder Coated White	10G 22G 26G	8.8 lb 4 kg	Yes

Product Spec Index

ITEM NUMBER	PRODUCT	WIDTH	DEPTH	LENGTH	WEIGHT	MATERIAL	FINISH	CERTIFICATION STANDARD	LOAD CAPACITY/ SWL	SOLD IN USA
0480235	Track System TracLINXX	3.4 in 87.5 mm	0.5 in 12.7 mm	40 in 1016 mm	3.3 lb 1.5 kg	Aluminum	Anodized	10G 22G 26G	—	Yes
0480237	Defibrillator Mount 360° Swivel w/ Rear Vertical Holder	5 in 125 mm	11.6 in 291 mm	6.7 in 167 mm	18.1 lb 8.2 kg	Aluminum	Powder Coated White	10G 22G 26G	55 lb 25 kg	Yes
0480238	CPR Mount	22.9-24.3 in 582-616 mm	12.6 in 320 mm	20.7 in 526 mm	7 lb 3.2 kg	Aluminum	Powder Coated White	10G 22G 26G	26.5 lb 12 kg	Yes
0480239	Defibrillator Mount Zoll AED Plus Adaptor Kit	10 in 255 mm	2.4 in 60 mm	8.7 in 220 mm	0.97 lb 0.44 kg	Aluminum	Powder Coated white	10G 22G 26G	—	Yes
0480240	Service Kit SafeMounts	—	—	—	—	—	—	—	—	Yes
0480241	Defibrillator Mount AED Mount Wall iNTRAXX	10.2 in 260 mm	9 in 229 mm	14.4 in 367 mm	6.85 lb 3.11 kg	Aluminum	Powder Coated White	10G 22G 26G	7.7 lb 3.5 kg	Yes
0480242	Defibrillator Mount AED Mount Bolt On	10.2 in 260 mm	7.5 in 191 mm	13.8 in 3650 mm	5.3 lb 2.4 kg	Aluminum	Powder Coated white	10G 22G 26G	7.7 lb 3.5 kg	Yes
0480242	Defibrillator Mount AED Mount Bolt On	10.2 in 260 mm	7.5 in 191 mm	13.8 in 3650 mm	5.3 lb 2.4 kg	Aluminum	Powder Coated White	10G 22G 26G	7.7 lb 3.5 kg	Yes
0480248	Accessory Mount Sharps Bin Mount	11.5 in 288	7.6 in 191 mm	9.7 in 242 mm	4.4 lb 2 kg	Aluminum	Powder Coated White	10G 22G 26G	2.2 lb 1 kg	Yes
0480249	Accessory Mount Trash Bin Mount	11.5 in 288 mm	7.6 in 191 mm	9.7 in 242 mm	4.4 lb 2 kg	Aluminum	Powder Coated White	10G 22G 26G	2.2 lb 1 kg	Yes
0480250	Container Sharps	12.4 in 319 mm	4.4 in 110 mm	11.6 in 290 mm	—	Plastic	Red	—	—	Yes
0480251	Container Trash	12 in 300 mm	4.4 in 110 mm	11.6 in 290 mm	—	Plastic	Red	—	—	Yes

KEY

(W) Width is measured as 'Y' axis in relation to mounting to the track
 (D) Depth is measured as 'Z' axis in relation to mounting to the track
 (L) Length is measured as 'X' axis in relation to mounting to the track

WARRANTY

- iNTRAXX track "Limited Lifetime Warranty"
- All other products come with a 2-year warranty
- For details refer to FERNO warranty statement.



70 Weil Way
Wilmington, OH 45177

Ambulance Systems

Aviation

Emergency Response System

Military

Mortuary

Rescue